



Network

PTZ

# XNP-6400R

2MP 40x IR PTZ camera



## Key Features

- Max. 2MP resolution
- 4.25~170mm (40x) zoom (digital 32x, total 1280x zoom)
- Max. IR viewable length 200m (656.17ft), Wise IR
- Day & Night (ICR), extreme WDR, DIS(Built-in gyro sensor)
- Intelligent analytics, Object auto tracking (Person/Vehicle), Target lock tracking
- H.264, H.265, MJPEG codec, WiseStream II
- IP66, IK10, NEMA4X, NEMA-TS 2 (2.2.8, 2.2.9)
- PTZ PLUS Design applied (Compact, Lighter, Simple cabling)
- SFP-supported by injector

## Compatible Devices



SBP-300LMW



SBP-156HMW



SBP-300WMW1



SPM-4210



SBP-156LMW



SBP-300KMW



SBP-300BW



SBP-300PMW



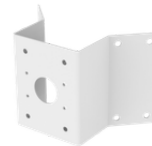
SPB-PTZ85W



SBP-156WMW



SBP-300WMW



SBP-156KMW



SBP-156CMW



SBP-300CMW

## XNP-6400R

2MP 40x IR PTZ camera



### Specifications

| Video                         |   |                        |
|-------------------------------|---|------------------------|
| Imaging Device                | Size  | 1/2.8"                 |
|                               | Type  | CMOS                   |
| Resolution                    | 1920x1080, 1280x1024, 1280x960, 1280x720, 1024x768, 800x600, 800x448, 720x576, 720x480, 640x480, 640x360, 320x240 |                        |
| Max. Framerate                | H.265/H.264   | 60fps/50fps(60Hz/50Hz) |
|                               | MJPEG   | 30fps                  |
| Min. Illumination (Lux)       | Color(1/30sec, 30IRE)   | 0.05                   |
|                               | BW(1/30sec, 30IRE)  | 0.005                  |
| Lens                          |   |                        |
| Focal Length (mm)             | 4.25~170  |                        |
| Zoom Ratio                    | Optical   | 40x                    |
|                               | Digital   | 32x                    |
| Max Aperture Ratio (F number) | Wide  | 1.6                    |
|                               | Tele  | 4.95                   |
| Angular Field of View         | Horizontal  | 65.66°~1.88°           |
|                               | Vertical  | 39.4°~1.09°            |
| Min. Object Distance          | 5m(16.4ft)  |                        |
| Focus Control                 | Auto, Manual, Oneshot AF, Focus save  |                        |
| Lens Type                     | DC auto iris  |                        |
| Pan / Tilt / Rotate           |   |                        |
| Pan / Tilt / Rotate Range     | Pan   | 360° Endless           |
|                               | Tilt  | 90°~20°                |
| Pan Speed                     | Preset  | Max. 700°/sec          |
|                               | Manual  | 0.024°/sec~250°/sec    |
| Tilt Speed                    | Preset  | Max. 500°/sec          |
|                               | Manual  | 0.024°/sec~250°/sec    |
| Sequence                      | Preset(300ea), Swing, Group(6ea), Trace, Tour, Auto Run, Schedule   |                        |
| Preset Accuracy               | Up to ±0.1°, Pan/Tilt correction  |                        |

## Operational

|  |                |  |
|--|----------------|--|
| Direction Indicator                      |                | Support  |
| Day & Night                              |                | Auto(ICR)  |
| Backlight Compensation                   |                | BLC, HLC, WDR, SSSR  |
| Wide Dynamic Range (dB)                  |                | 150  |
| Digital Noise Reduction                  |                | SSNR V   |
| Digital Image Stabilization              |                | Support(built-in gyro sensor)  |
| Defog                                    |                | Support  |
| Motion Detection                         | Quantity       | 8ea  |
|  | Shape          | 8point Polygonal zones   |
| Privacy Masking                          | Quantity       | 32ea   |
|  | Shape          | 4point Quadrangle zones  |
|  | Color / Option | Gray, Green, Red, Blue, Black, White, Mosaic   |
| Gain Control                             |                | Low, Middle, High  |
| White Balance                            |                | ATW, AWC, Manual, Indoor, Outdoor  |
| Electronic Shutter                       | Mode           | Minimum, Maximum, Anti flicker   |
|  | Speed Range    | 2~1/12,000sec  |
| Video Rotation                           |                | Flip&Mirror  |
| Alarm Interface                          | Others         | Support alarm I/O via optional I/O box   |
| Alarm Triggers                           |                | Analytics, Network disconnect, Alarm input   |
| Alarm Events When Alarm Trigger Occurred |                | File upload(image): e-mail/FTP/SFTP,<br>File upload(video clip): FTP/SFTP,<br>Notification: e-mail,<br>Recording: SD/SDHC/SDXC or NAS recording at event triggers,Alarm output,<br>Handover: PTZ preset,send message by HTTP/HTTPS/TCP,Audio clip playback,<br>MQTT: publication |
| Audio In                                 |                | Support via optional I/O box   |
| Audio Out                                |                | Support via optional I/O box   |
| Light Type                               |                | IR LED   |
| Light Viewable Length                    | IR             | WiseIR 200m(656.17ft)  |
| IR Wavelength                            |                | 850nm  |
| Water Removal                            |                | Support(Spin Dry, Lens heater)   |
| Auto Tracking                            |                | Support, Object auto tracking(Person/Vehicle), Target lock tracking  |

## Analytics

|                  |        |  |
|------------------|--------|--|
| Analytics Events | Normal | Motion detection, Tampering, Fog detection, Face detection, Audio detection, Sound classification, Shock detection, Virtual area(Lotering, Intrusion, Enter/Exit, Appear/Disappear), Virtual line(Crossing, Direction) |
|------------------|--------|--|

## Network

|          |                                    |
|----------|------------------------------------|
| Ethernet | Metal shielded RJ-45(10/100BASE-T) |
|----------|------------------------------------|

## Network

|                                   |                    |   |
|-----------------------------------|--------------------|---|
| Video Compression                 |                    | H.265/H.264: Main/Baseline/High, MJPEG  |
| Smart Codec                       |                    | Manual, WiseStream II   |
| Bitrate Control                   |                    | H.265/H.264: CBR or VBR, MJPEG: VBR   |
| Streaming                         | Unicast            | Up to 20 users  |
|                                   | Multicast          | Support   |
|                                   | Multiple Streaming | Up to 10 profiles   |
| Protocol                          |                    | IPv4, IPv6, TCP/IP, UDP/IP, RTP(UDP), RTP(TCP), RTCP, RTSP, NTP, HTTP, HTTPS, SSL/TLS, DHCP, FTP, SFTP, SMTP, ICMP, IGMP, SNMPv1/v2c/v3(MIB-2), ARP, DNS, DDNS, QoS, UPnP, Bonjour, LLDP, CDP, SRTP(TCP, UDP Unicast), MQTT, NTCIP 1205 |
| Application Programming Interface | ONVIF              | S, G, T   |
|                                   | Others             | SUNAPI(HTTP API), Hanwha Vision Open Platform   |
| Direct Cloud Connection           |                    | Support   |

## Security

|                        |   |
|------------------------|---|
| OS / Firmware Protect  | Encrypted firmware, Secure boot, Signed firmware                        |
| User authentication    | Digest authentication, Prevent brute-force attack                       |
| Network authentication | IEEE 802.1X(EAP-TLS, EAP-LEAP, EAP-PEAP, MSCHAPv2)                      |
| Secure Communication   | HTTPS, WSS(WebSocket Secure), SRTP                                      |
| Access Control         | IP-based access control   |
| Data Protect           | Encryption credentials, Encrypt compress for live recording file export |
| Audit                  | Access / System / Event Log management                                  |
| Device ID              | Device certificate(Hanwha Vision Root CA)                               |
| Secure Storage         | HTPM(Hanwha Trusted Platform Module), SDcard partition encrypt(AES-256) |
| Security Certificate   | CyberSecurity assurance program UL CAP(UL 2900-2-3 L2)                  |

## General

|              |                    |                               |
|--------------|--------------------|-------------------------------|
| Memory       | RAM                | 4GB                           |
|              | Flash              | 512MB                         |
| Edge Storage | Micro SD/SDHC/SDXC | Max. 512GB x 2slot(Total 1TB) |

## Environmental & Electrical

|                     |             |  |
|---------------------|-------------|--|
| Operating Condition | Temperature | -40°C~+50°C(-40°F~+122°F)  |
|                     | Humidity    | 0~100% RH(condensing)  |
|                     | Others      | +74°C(+165°F)(Max) based on NEMA-TS 2(2.2.7), Start up should be done at above -30°C, Humidity control with AIR vent |
| Storage Condition   | Temperature | -50°C~+60°C(-58°F~+140°F)  |
|                     | Humidity    | 0~90% RH(non-condensing)   |
| Input Voltage       |             | PoE++(IEEE802.3bt type3, Class6)   |
| Power Consumption   | PoE         | Max. 40W, Typical 20W  |

---

**Mechanical**

---

|                    |   |
|--------------------|---|
| Color              | White, Black                                  |
| Material           | Aluminum, PC(Polycarbonate), Hard-coated dome |
| RAL Code           | RAL9003, RAL9005                              |
| Product Dimensions | ø158x293.3mm(6.22x11.55")                     |
| Product Weight     | 3,200g(7.05lb)                                |

---

**DORI (EN62676-4 standard)**

---

|                           |      |                   |
|---------------------------|------|-------------------|
| Detect (25PPM/ 8PPF)      | Wide | 59.5m(195.3ft)    |
|                           | Tele | 2340.4m(7678.4ft) |
| Observe (63PPM/ 19PPF)    | Wide | 23.8m(78.1ft)     |
|                           | Tele | 936.2m(3071.4ft)  |
| Recognize (125PPM/ 38PPF) | Wide | 11.9m(39.1ft)     |
|                           | Tele | 468.1m(1535.7ft)  |
| Identify (250PPM/ 76PPF)  | Wide | 6.0m(19.5ft)      |
|                           | Tele | 234.0m(767.8ft)   |

## XNP-6400R

2MP 40x IR PTZ camera



### CAD

Unit: mm [inch]

