

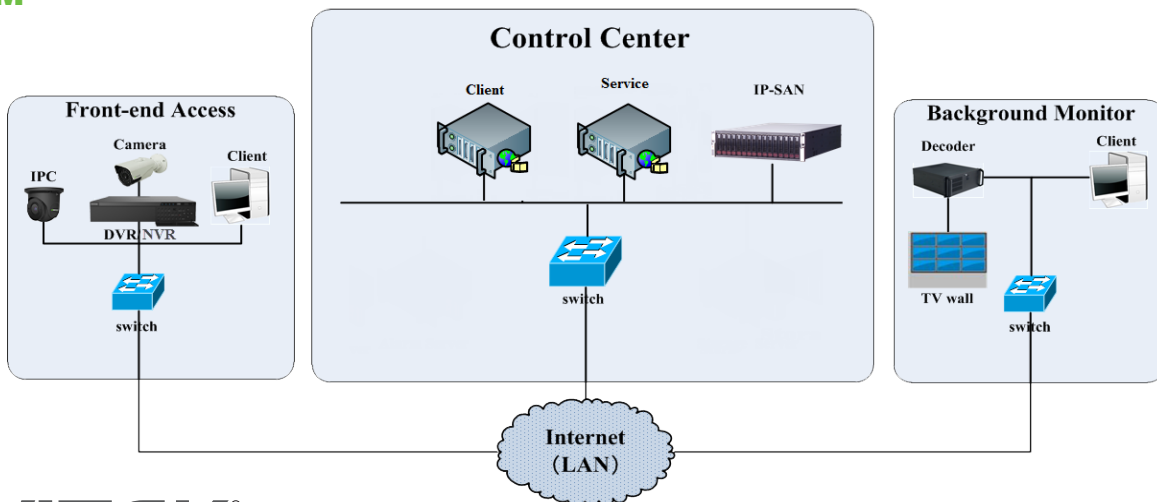


The VITEK VT-SVRM10-S is a satellite media transfer server designed specifically to support security and surveillance applications. This unit (VT-SVRM10-S) works with the VT-SVRM10-C (Base / Configuration server). Pre-installed software on the device combines video stream replication and distribution. These units easily meet the requirements of large and medium sized video surveillance systems, delivering powerful performance, flexible expansion and compatibility, a user-friendly interface, and affordability. These units work without installing additional HDDs.

FEATURES

- 880MBPS stream access and transfer per device
- 4 Gigabit Ethernet Ports, with Powerful Network Redundancy Capabilities
- Stable and Reliable X86 Hardware Platform
- Simple Deployment with Pre-set Software
- Supports access by devices manufactured by Vitek and other leading CCTV manufacturers
- Supports ONVIF Protocol, and Device Auto-Report
- Add Devices via IP Address, IP Address Segment, Domain Name and Serial Number
- Quickly Add and Automatically Search Devices
- View with Standard, Wide, and Customized Screen Modes

SYSTEM



VT-SVRM10-S Detailed Specifications	
CPU	Intel Xeon Processor E3-1225V5 4C/4T 3.3GHz 8M HD Graphics P530/80W
OS	Cent OS7.3
Memory	8GB DDR4 ECC up to 64GB
Network Card	Dual Gigabit Ports I350-T2 + Intel 210-AT Dual Gigabit Ethernet Ports
HDD	1 built-in Kingston SSD/120G/SATA/6Gb/s/2.5inch/SUV400S37; 3.5/2.5 inch HDD slots × 3
PCI Expansion	1*PCI-E3.0*8; 1*PCI-E3.0*8 (X4); 1*PCI-E3.0*16 (X8)
Management	BMC Module; Support IPMI2.0, 1 10/100 Mbps RJ45 Management Port, KVM, Supporting Remote Management
Interfaces	VGA×1, HDMI×1, USB×6 (Front Panel: USB 2.0×2, Rear USB 3.0×4), Network Interface×4, CO×1, Remote Mgmt Port×1, Audio In/Output×2
Max CH. Access	2048
Max Device Access	300 NVRs or 500 IPCs
Configuration Server Requirement	Must be used with VITEK VT-SVRM10-C
Access Bandwidth	880Mbps
Output Bandwidth	880Mbps (Live View & Transfer)
Power	100 ~ 240V-6 ~ 3A/50 ~ 60Hz
Power Consumption	≤300 with HDD
Working Environment	Working: 50°F ~ 95°F (10°C ~ 35°C); Standby: -40°F ~ +158°F (-40°C ~ +70°C) (Ambient)
Relative Humidity	Standby: 95% 77°F ~ 86°C (25°C ~ 30°C) (non-condensing)
Noise	Working: <50dBA; 6.2BA (<82°F)
Gross Weight	Approx. 26.45lb (12KG)
Dimensions: Inches (mm)	16.93" × 19.17" × 1.73" (430mm x 487mm x 44mm) (W x D x H)
Installation	Standard 19-Inch Rack Mount

DIMENSIONS

