

VTD-TND4WCL-2

4MP Opti-Color Full-Color Dome Network Camera with Programmable PLUS Analytics and Knight Guard

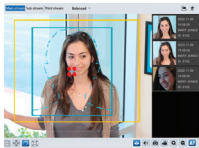


KEY FEATURES

- 1/1.79" 4 MegaPixel CMOS Progressive Scan Sensor
- Up to 30fps live view @ 4MP (2688 × 1520)
- 2.8mm Fixed Lens with F1.0 Aperture for ultra-low light sensitivity and 0.0001 lux
- Opti-Color Technology offers unparalleled full-color night vision capabilities, capturing vivid, high-quality images in ultra-low light conditions—transforming nighttime security with clarity never before achieved
- Knight Guard White Light Illumination up to 100' for full-color night vision and deterrence
- True WDR (120dB), 3D-DNR, BLC, and HLC to overcome extreme lighting challenges
- Programmable PLUS Analytics: Line Crossing, Region Intrusion/ Entrance/Exit (Human/Vehicle Classification), Abandoned/ Missing Object, Scene Change, Video Blur, Abnormal Color, Audio Exception, Face Detection and Capture
- Built-in Microphone with Audio Input for situational awareness
- Edge Storage with microSD Card Support up to 512GB
- Rugged Dome Housing with IP67 and IK10 protection for indoor or outdoor installations
- Power Options: 12VDC or PoE (IEEE 802.3af), <7W
- NDAA Compliant

**Please research local, state and federal laws regarding the implementation of audio surveillance.*

TRANSCENDENT PROGRAMMABLE PLUS ANALYTICS!



FACIAL DETECTION
Face Detection with Face Capture



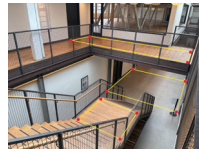
TARGET COUNTING
People, Vehicles, and Motor/Bicycles by Line



LINE CROSSING
Track People or Vehicles as Entering or Exiting Designated Areas

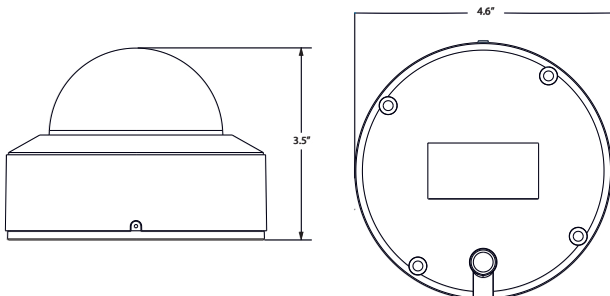


OBJECT TRACKING
Track Objects Removed or Abandoned in Secure Areas



AREA TRACKING
Fully Programmable Regional Intrusion Detection

DIMENSIONS



TRANSCENDENT SERIES



FULL COLOR AT NIGHT



BUILT-IN MICROPHONE



4 MEGAPIXEL



FACIAL DETECTION



FIXED LENS



PROGRAMMABLE PLUS ANALYTICS



OPTI-COLOR DOME WITH KNIGHT GUARD FULL-COLOR NIGHT VISION

The VITEK Transcendent VTD-TND4WCL-2 Opti-Color Dome Camera delivers 4MP full-color video performance in a vandal-resistant dome housing. Featuring Opti-Color imaging and Knight Guard White Light Illumination, this camera ensures brilliant full-color surveillance in ultra-low light conditions while actively deterring intruders. With Programmable PLUS Analytics, security professionals gain powerful detection and classification tools to reduce false alarms and improve system performance. Built-in audio capture, IP67 weather resistance, IK10 vandal protection, and flexible PoE installation make this dome camera an ideal choice for commercial, institutional, and high-risk environments requiring dependable 24/7 full-color monitoring.

RELATED PRODUCTS AND ACCESSORIES!

VT-TJB03A

Optional Junction box for Cable Management

VT-TCNMT

Universal Corner Mount Adapter - reqs. Junction Box or Wall Mount

VT-TPLMT

Universal Pole Mount Adapter - reqs. Junction Box or Wall Mount

VT-TFMT-S

Optional In Ceiling / Flush Mount



VT-TWM04X
Wall Mount for Transcendent Motorized Dome Camera



VT-TPDM-1
Pendant Mount for Transcendent Motorized Dome - reqs. VT-TJB03A



VT-TWMT-3
Wall Mount for Motorized Dome Camera



An Eye On Innovation



www.vitekccv.com



VTD-TND4WCL-2



SPECIFICATIONS

Image Sensor	1/1.79" CMOS Progressive Scan
Max. Resolution	4MP (2688 × 1520)
Electronic Shutter	1/3s ~ 1/100000s, Auto/Manual
Iris Type	Fixed
Min. Illumination	0.0001 lux @F1.0 (AGC ON); 0 lux with Knight Guard White Light
S/N Ratio	≥50dB
Lens	2.8mm Fixed Lens, F1.0 (H:112° / V:61° / D:132°)
DORI (2.8mm)	Detect 170ft / Observe 68ft / Recognize 33ft / Identify 17ft
Angle Adjustment	Pan: 0–355°, Tilt: 0–70°, Rotation: 0–180°
WDR	120dB
BLC / HLC / Defog	Yes
DNR	3D DNR
Electronic Image Stabilization	Yes
Region Of Interest	Configurable per region
Image Settings	Brightness, Contrast, Saturation, Hue, Sharpness, Flip, Mirror, NR
Video Compression	H.265+/H.265/H.264+/H.264/MJPEG
H.264 Profiles	Baseline / Main / High
Resolutions	4MP, 2K, 1080P, 720P, D1, VGA, 640×360, CIF, 480×240
Frame Rate	Up to 30fps @ 4MP
Bitrate	32 Kbps ~ 8 Mbps; VBR / CBR
Protocols	ONVIF, UDP, IPv4/IPv6, DHCP, NTP, RTSP, RTP, RTMP, FTP, DDNS, SMTP, SNMP, HTTP/HTTPS, UPnP, P2P, QoS, 802.1x
Connections	Up to 10 users simultaneous monitoring
Storage	microSD up to 512GB; Network remote storage
Interfaces	RJ-45 (10/100 Base-T), 1ch Audio In, Built-in Mic
Events	Programmable PLUS Analytics: Line Crossing, Region Intrusion/Entrance/Exit (Human/Vehicle Classification), Abandoned/ Missing Object, Scene Change, Video Blur, Abnormal Color, Audio Exception, Face Detection and Capture
White Light Range	Up to 100' Knight Guard White Light
Ingress Protection	IP67 & IK10
Power Supply	DC12V / PoE (IEEE802.3af), <7W
Operating Conditions	-22°F ~ 140°F, RH <95%
Mounting	Ceiling / Wall
Certifications	CE, FCC, RoHS, WEEE, REACH
Weight	1.41 lb (0.64kg)
Dimensions	4.7 × 3.5 in (119 × 87.8 mm)

*Please research local, state and federal laws regarding the implementation of audio surveillance.



Pair with one of several VITEK Transcendent Series Network or Digital Recorders offering a Myriad of Advanced Analytic Functions and Applications. See www.vitekctv.com for More!

Firmware and Features may be upgraded periodically – Please contact your VITEK Representative for complete information on updates and downloads.