

VTC-TNT8WCL-2

VITEK 8MP (4K) Opti-Color Full-Color Turret Network Camera with Programmable PLUS Analytics and Knight Guard

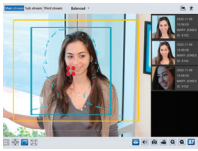


KEY FEATURES

- 1/1.8" 8 MegaPixel CMOS Progressive Scan Sensor
- Up to 20fps live view @ 8MP (3840 x 2160) / 30fps @ 4MP and below
- 2.8mm Fixed Lens with F1.0 Aperture for ultra-low light sensitivity and 0.0005 lux
- Opti-Color Technology offers unparalleled full-color night vision capabilities, capturing vivid, high-quality images in ultra-low light conditions—transforming nighttime security with clarity never before achieved
- Knight Guard White Light Illumination up to 100' for full-color night vision and deterrence
- True WDR (120dB), 3D-DNR, BLC, and HLC to overcome extreme lighting challenges
- Programmable PLUS Analytics: Line Crossing, Region Intrusion/Entrance/Exit (Human/Vehicle Classification), Abandoned/Missing Object, Scene Change, Video Blur, Abnormal Color, Audio Exception, Face Detection and Capture
- Built-in Microphone with Audio Input for added situational awareness
- Edge Storage with microSD Card Support up to 1TB
- Compact Turret Housing with IP67 Protection for indoor or outdoor installation
- Power Options: 12VDC or PoE (IEEE 802.3af)
- NDAA Compliant

*Please research local, state and federal laws regarding the implementation of audio surveillance.

TRANSCENDENT PROGRAMMABLE PLUS ANALYTICS!



FACIAL DETECTION
Face Detection with Face Capture



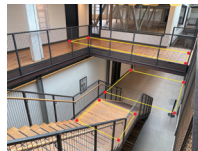
TARGET COUNTING
People, Vehicles, and Motor/Bicycles by Line



LINE CROSSING
Track People or Vehicles as Entering or Exiting Designated Areas

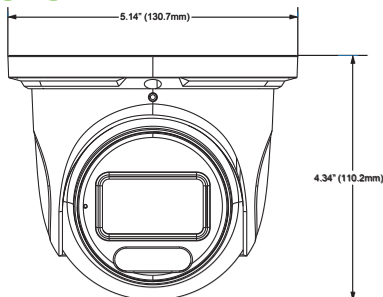


OBJECT TRACKING
Track Objects Removed or Abandoned in Secure Areas



AREA TRACKING
Fully Programmable Regional Intrusion Detection

DIMENSIONS



TRANSCENDENT SERIES



FULL COLOR AT NIGHT



BUILT-IN MICROPHONE



8 MEGAPIXEL



FACIAL DETECTION



FIXED LENS



ADVANCED ANALYTICS

OPTI-COLOR

PROGRAMMABLE+ ANALYTICS PLUS

KNIGHT GUARD

OPTI-COLOR TURRET WITH KNIGHT GUARD FULL-COLOR NIGHT VISION

The VITEK Transcendent VTC-TNT8WCL-2 Opti-Color Turret Camera delivers 8MP Ultra HD resolution with the power of Opti-Color imaging, ensuring brilliant, full-color video in ultra-low light conditions. Equipped with Knight Guard White Light Illumination, the camera provides both unmatched nighttime visibility and a proactive deterrent against intruders. With Programmable PLUS Analytics, security professionals benefit from intelligent event detection, human/vehicle classification, and advanced forensic search capabilities. Built-in audio capture, rugged IP67 housing, PoE support, and onboard edge storage make this camera a flexible and reliable solution for commercial, institutional, and residential surveillance.

RELATED PRODUCTS AND ACCESSORIES!

VT-TJB01
Optional Junction box for Cable Management



VT-TCNMT
Universal Corner Mount Adapter - reqs. Junction Box



VT-TPLMT
Universal Pole Mount Adapter - reqs. Junction Box



VT-TJB021
Optional Junction box for Cable Management



VT-TWM03X
Wall Mount for Transcendent Motorized Turret Camera



VT-TPDM-2
Pendant Mount for Transcendent Motorized Turret - reqs. VT-TJB01



VT-TPDM-3
Pendant Mount for Transcendent Motorized Turret - reqs. VT-TJB021



VT-TWMT-4
Wall Mount for Motorized Turret Camera



An Eye On Innovation



www.vitekccv.com



SPECIFICATIONS

Image Sensor	1/1.8" CMOS Progressive Scan
Max. Resolution	3840 × 2160 (8MP/4K)
Electronic Shutter	Auto/Manual, 1/3s ~ 1/100,000s
Iris Type	Fixed
Min. Illumination	0.0005 lux @F1.0 (AGC ON); 0 lux with Knight Guard White Light
S/N Ratio	≥50dB
Lens	2.8mm Fixed Lens, F1.0 (H:112° / V:61° / D:132°)
DORI (2.8mm)	Detect 170ft / Observe 68ft / Recognize 33ft / Identify 17ft
Angle Adjustment	Pan: 0–360°, Tilt: 0–80°, Rotation: 0–360°
WDR	120dB
BLC / HLC / Defog	Yes
DNR	3D DNR
Electronic Image Stabilization	Yes
Region Of Interest	Configurable pre region
Image Settings	Brightness, Contrast, Saturation, Hue, Sharpness, Flip, Mirror, NR
Video Compression	H.265+/H.265/H.264+/H.264/MJPEG
H.264 Profiles	Baseline / Main / High
Resolutions	8MP, 4MP, 2K, 1080P, 720P, D1, VGA, 640×360, CIF, 480×240
Frame Rate	Up to 20fps @ 8MP; 30fps at lower resolutions
Bitrate	32 Kbps ~ 8 Mbps; VBR / CBR
Protocols	ONVIF, UDP, IPv4/IPv6, DHCP, NTP, RTSP, RTP, RTMP, FTP, DDNS, SMTP, SNMP, HTTP/HTTPS, UPnP, P2P, QoS, 802.1x
Connections	Up to 10 users simultaneous monitoring
Storage	microSD up to 1TB; Network remote storage: ANR
Interfaces	RJ-45 (10/100 Base-T), 1ch Audio In, Built-in Mic
Events	Programmable PLUS Analytics: Line Crossing, Region Intrusion/Entrance/Exit (Human/Vehicle Classification), Abandoned/ Missing Object, Scene Change, Video Blur, Abnormal Color, Audio Exception, Face Detection and Capture
White Light Range	Up to 100' Knight Guard White Light
Ingress Protection	IP67
Power Supply	DC12V / PoE (IEEE802.3af), <6.5W
Operating Conditions	-22°F ~ 140°F, RH <95%
Mounting	Ceiling / Wall
Certifications	CE, FCC, RoHS, WEEE, REACH
Weight	1.36 lb
Dimensions	4.34 x 5.14in (110.2 x 130.7mm)

*Please research local, state and federal laws regarding the implementation of audio surveillance.



Pair with one of several VITEK Transcendent Series Network or Digital Recorders offering a Myriad of Advanced Analytic Functions and Applications. See www.vitekctv.com for More!

Firmware and Features may be upgraded periodically – Please contact your VITEK Representative for complete information on updates and downloads.

