

VTC-TNT4WCL-2

VITEK 4MP Opti-Color Full-Color Turret Network Camera with Programmable PLUS Analytics and Knight Guard

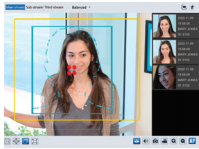


KEY FEATURES

- 1/1.79" 4 MegaPixel CMOS Progressive Scan Sensor
- Up to 30fps live view @ 4MP (2688 x 1520)
- 2.8mm Fixed Lens with F1.0 Aperture for ultra-low light sensitivity and 0.0001 lux
- OPTI-COLOR offers unparalleled full-color night vision capabilities, capturing vivid, high-quality images in ultra-low light conditions, transforming nighttime security with clarity never before achieved in surveillance cameras!
- Knight Guard White Light Illumination up to 100' for full-color night vision and deterrence
- True WDR (120dB), 3D-DNR, BLC, and HLC to overcome extreme lighting challenges
- Programmable PLUS Analytics: Line Crossing, Region Intrusion/Entrance/Exit (Human/Vehicle Classification), Abandoned/Missing Object, Scene Change, Video Blur, Abnormal Color, Audio Exception, Face Detection and Capture
- Built-in Microphone with Audio Input for added situational awareness
- Edge Storage with microSD Card Support up to 512GB
- Compact Turret Housing with IP67 Protection for indoor or outdoor installation
- Power Options: 12VDC or PoE (IEEE 802.3af)
- NDAA Compliant

**Please research local, state and federal laws regarding the implementation of audio surveillance.*

TRANSCENDENT PROGRAMMABLE PLUS ANALYTICS!



FACIAL DETECTION
Face Detection with Face Capture



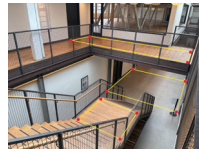
TARGET COUNTING
Track People, Vehicles, and Motor/Bicycles by Line



LINE CROSSING
Track People or Vehicles as Entering or Exiting Designated Areas

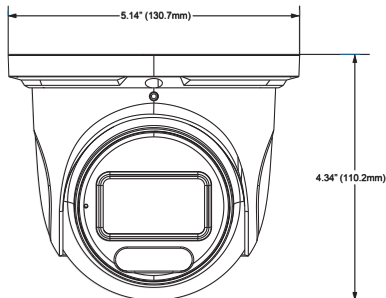


OBJECT TRACKING
Track Objects Removed or Abandoned in Secure Areas



AREA TRACKING
Fully Programmable Regional Intrusion Detection

DIMENSIONS



TRANSCENDENT SERIES



FULL COLOR AT NIGHT



BUILT-IN MICROPHONE



4 MEGAPIXEL



FACIAL DETECTION



FIXED LENS



PROGRAMMABLE PLUS ANALYTICS



OPTI-COLOR TURRET WITH KNIGHT GUARD FULL-COLOR NIGHT VISION

The VITEK Transcendent VTC-TNT4WCL-2 Opti-Color Turret Camera combines advanced Opti-Color imaging with the compact versatility of a turret housing to deliver unmatched full-color surveillance in ultra-low light conditions. Knight Guard White Light Illumination not only ensures brilliant nighttime visibility but also acts as a powerful deterrent against intruders. With Programmable PLUS Analytics, security professionals benefit from precise human/vehicle classification, face detection, and enhanced forensic search capabilities. Built-in audio capture, durable IP67 housing, and onboard edge storage provide a reliable, flexible, and cost-effective solution for commercial, residential, and institutional deployments.

RELATED PRODUCTS AND ACCESSORIES!

VT-TJB01
Optional Junction box for Cable Management

VT-TCNMT
Universal Corner Mount Adapter - reqs. Junction Box

VT-TPLMT
Universal Pole Mount Adapter - reqs. Junction Box

VT-TJB021
Optional Junction box for Cable Management



VT-TWM03X
Wall Mount for Transcendent Motorized Turret Camera

VT-TPDM-2
Pendant Mount for Transcendent Motorized Turret - reqs. VT-TJB01

VT-TPDM-3
Pendant Mount for Transcendent Motorized Turret - reqs. VT-TJB021

VT-TWMT-4
Wall Mount for Motorized Turret Camera



An Eye On Innovation



www.vitekccv.com



VTC-TNT4WCL-2



SPECIFICATIONS

Image Sensor	1/1.79" CMOS
Max. Resolution	2688 × 1520 (4MP)
Electronic Shutter	Auto/Manual, 1/3s ~ 1/100,000s
Iris Type	Fixed
Min. Illumination	0.0001 lux @F1.0 (AGC ON); 0 lux with white light
S/N Ratio	≥50dB
Lens	2.8mm F1.0 (H:112°/V:61°/D:132°)
DORI (2.8mm)	Detect 170ft / Observe 68ft / Recognize 33ft / Identify 17ft
Angle Adjustment	Pan: 0–360°, Tilt: 0–80°, Rotation: 0–360°
WDR	120dB
BLC / HLC / Defog	Yes
DNR	3D DNR
Electronic Image Stabilization	Yes
Region Of Interest	Configurable per region
Image Settings	Brightness, Contrast, Saturation, Hue, Sharpness, Flip, Mirror, NR
Video Compression	H.265+/H.265/H.264+/H.264/MJPEG
H.264 Profiles	Baseline / Main / High
Resolutions	4MP, 2K, 1080P, 720P, D1, VGA, 640×360, CIF, 480×240
Frame Rate	Main: 1–30fps @60Hz, 1–25fps @50Hz Sub/Third: up to 720P, D1, CIF
Bitrate	32 Kbps ~ 8 Mbps; VBR / CBR
Protocols	ONVIF, UDP, IPv4/IPv6, DHCP, NTP, RTSP, RTP, RTMP, FTP, DDNS, SMTP, SNMP, HTTP/HTTPS, UPnP, P2P, QoS, 802.1x
Connections	Up to 10 users simultaneous monitoring
Storage	microSD up to 512GB; Network remote storage
Interfaces	RJ-45 (10/100 Base-T), 1ch Audio In, Built-in Mic
Events	Programmable PLUS Analytics: Line Crossing, Region Intrusion/Entrance/Exit (Human/Vehicle Classification), Abandoned/ Missing Object, Scene Change, Video Blur, Abnormal Color, Audio Exception, Face Detection and Capture
Face Detection	Advanced Face AI – Face Detection & Capture
Statistics	People, Vehicle Counting, & Target Counting
White Light Range	Up to 100' Knight Guard White Light
Ingress Protection	IP67
Power Supply	DC12V / PoE (IEEE802.3af), <6.5W
Certifications	CE, FCC, RoHS, WEEE, REACH
Operating Conditions	-22°F~140°F (-30°C~60°C), RH <95%
Weight	1.36 lb (0.616kg)
Dimensions	5.14" x 4.34" (130.7 x 110.2mm)

*Please research local, state and federal laws regarding the implementation of audio surveillance.

