

VTC-TNB8X4MSN

Transcendent 8 MegaPixel (4 x 2 MP) Multi-Sensor 180° Panoramic Network Camera with GEN IV Advanced Analytics



KEY FEATURES

- 4 x 1/2.8" 2 MP Progressive Scan CMOS Sensors (Total 8 MP – 4096 x 1792)
- Four 3.3 mm Fixed Iris Lenses with F 2.0 Aperture
- Seamless 180° Panoramic View with Image Stitching Technology
- Up to 30 fps Live View @ 8 MP (4096 x 1792)
- Smart IR Illumination up to 65 ft (20 m) for Uniform Night Imaging
- Digital WDR / 3D-DNR / BLC / HLC / Defog
- GEN IV Advanced Analytics: Regional Entrance / Exit Detection, Line Crossing, Target Counting (Human / Vehicle Classification), Face Detection, Heat Map, Video Blur, Color Detection, Abnormal Video, and more!
- Human / Vehicle Classification with Heat Map and Target Counting
- Face Detection and Capture Support
- 1 CH Audio In + 1 CH Audio Out for Two-Way Communication
- 1 CH Alarm In + 1 CH Alarm Out (24 V DC/AC 1 A Max)
- Built-in microSD Card Slot (up to 256 GB)
- Smart H.265+ / H.265 / H.264+ / H.264 / MJPEG Triple Streaming
- PoE (802.3 at) and 12 V DC Power Options
- IP67 Weather Resistance and IK10 Impact Rating
- NDAA Compliant Design – No Restricted Components
- 3-Year Warranty

**Research local, state and federal laws regarding the implementation of audio surveillance.*

180° PANORAMIC VIEW WITH SEAMLESS IMAGE STITCHING

The VTC-TNB8X4MSN delivers a seamless 180° panoramic image with 8MP (4K) resolution, using four high performance 2 MP sensors and distortion-free stitching. The result is a crystal-clear, full-color view with enhanced depth, greater detail, and none of the warping seen in fisheye cameras.



TRANSCENDENT



NETWORK



FACE AI: DETECT, COMPARE, RECOGNIZE



8 MEGAPIXEL (4K) WITH 4 X 2MP



MULTI-SENSOR CAMERA



2-WAY AUDIO



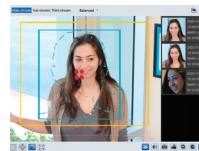
GEN IV ADVANCED ANALYTICS



180° WIDE-AREA SURVEILLANCE WITH MULTI-SENSOR PANORAMIC CLARITY

The VITEK VTC-TNB8X4MSN Multi-Sensor IP Camera delivers ultra-wide 180° panoramic surveillance using four 2 MP progressive-scan CMOS image sensors (8 MP total) and four 3.3 mm lenses, seamlessly stitched into a single high-resolution image. Featuring GEN IV Advanced Analytics, Smart IR illumination, and an NDAA-compliant metal housing, it provides exceptional coverage, intelligence, and reliability for transportation hubs, campuses, retail centers, parking lots, and large public areas.

TRANSCENDENT GEN IV ADVANCED ANALYTICS!



AI FACIAL RECOGNITION
Face Detection with Face Database



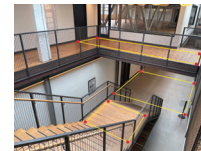
TARGET COUNTING
People, Vehicles, and Motor/Bicycles



VIDEO META DATA
Extract 13 features from humans and 5 from motor vehicles



OBJECT TRACKING
Track Objects Removed or Abandoned in Secure Areas



AREA TRACKING
Fully Programmable Regional Intrusion Detection



LINE CROSSING
Track People or Vehicles as Entering or Exiting Designated Areas

An Eye On Innovation



www.vitekccv.com





SPECIFICATIONS

Image Sensor	4 × 1/2.8" Sony Progressive Scan CMOS
Max Resolution	4096 × 1792 (8 MP Total)
Electronic Shutter	1/3 s ~ 1/10,000 s (Auto / Manual)
Min. Illumination	Color: 0.02 Lux @ F2.0 (AGC ON); B/W: 0.008 Lux @ F2.0 (AGC ON); 0 Lux with IR
S/N Ratio	≥ 50 dB
Day/Night	Auto (ICR)
WDR / DNR / Enhancement	Digital WDR, 3D DNR, BLC, HLC, Defog
Angle Adjustment	Pan: 0°~360° / Tilt: 0°~90° / Rotation: 0°~360°
Lens	3.3 mm Fixed × 4 Sets @ F2.0
Field of View	Horizontal: 180° / Vertical: 78°
D.O.R.I. Distance	Detect: 44 m / Observe: 18 m / Recognize: 9 m / Identify: 4 m
IR Illumination	Smart IR up to 65 ft (20 m)
IR Type	850 nm IR Array with Smart Brightness Control
Video Compression	Smart H.265+ / H.265 / H.264+ / H.264 / MJPEG
H.264 Standard	Baseline / Main / High Profile
Audio Compression	G.711 A / G.711 U
Resolution Options	8 MP (4096×1792), 6 MP (3680×1616), 4 MP (3040×1328), 2 MP (2128×928), 1840×800, 1456×640, 1056×464, 752×336
Frame Rates	Main: 8/6/4/2 MP @ 30 fps (60 Hz) Sub: 1840×800 / 1456×640 / 1056×464 @ 30 fps Third: 1456×640 / 1056×464 / 752×336 @ 30 fps
Bit Rate / Type	64 Kbps ~ 10 Mbps / VBR or CBR
Image Settings	ROI, Saturation, Brightness, Hue, Contrast, Wide Dynamic, Sharpness, Mirror, Flip, NR (adjustable via client or browser)
Privacy Masking	4 Zones
ROI	Each ROI configurable separately
Audio / Alarm Interface	1 CH Audio In / 1 CH Audio Out (Line Out); 1 CH Alarm In / 1 CH Alarm Out (Max 24 V DC/AC, 1 A)
Network Interface	RJ45 10M/100M Adaptive Ethernet
RS-485	Supported (Half Duplex)
Storage	microSD Card Slot (up to 256 GB)
Reset Button	Yes
Smart Event Detection	Line Crossing, Region Intrusion / Entrance / Exit (Human/Vehicle Classification), Loitering, Illegal Parking, Abandoned / Missing Object
Exception Detection	Scene Change, Video Blur, Color Abnormality, Audio Exception
Statistics / Heat Map	Target Counting by Line / Area (Human / Vehicle), Heat Map Visualization
Face Detection	Face Detection and Capture
Video Metadata	Captures Human, Motor Vehicle, and Non-Motor Vehicle targets; Extracts 13 Human, 4 Motor Vehicle, and 1 Non-Motor Vehicle features
Smart Alarm	Motion Detection, Sensor Alarm, SD Card Error, SD Card Full, IP Conflict, Network Disconnection

*Please research local, state and federal laws regarding the implementation of audio surveillance.

www.vitekccv.com

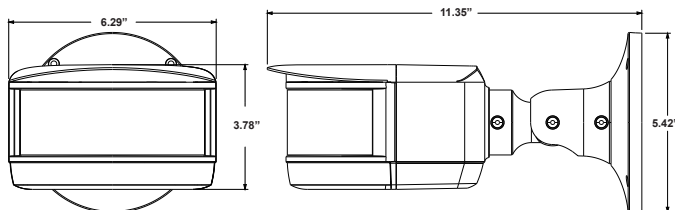
SPECIFICATIONS

Alarm Linkage	Upload to FTP / Memory Card, Notify Surveillance Center, Send Email, Trigger Alarm Output / Recording / Capture
General Functions	Watermark, Video Mask, Heartbeat, Image Distortion Correction, Corridor Mode, ANR, Cloud Upgrade, Disarming
Security Features	Firmware / HTTPS / Configuration Encryption, Illegal Login Lock, IP Filtering, 802.1x Authentication, Basic & Digest Authentication for HTTP/RTSP
Network Protocols	IPv4 / IPv6, TCP/IP, UDP, DHCP, PPPoE, RTSP, RTP, RTMP, RTCP, DDNS, SMTP, FTP, SNMP, HTTP, HTTP POST, HTTPS, 802.1x, UPnP, QoS, NTP, P2P
Integration Protocols	ONVIF (Profiles S/T/G), SDK, API
Web Browsers Supported	Chrome 105+, Edge 105+, Firefox 121+, Safari 14+
Remote Monitoring	Web Client / NVR / Transcendent VMS / Mobile App (iOS / Android)
Concurrent Users	Up to 10 simultaneous users
Power Input	12 V DC \pm 10% / PoE+ (802.3 at)
Power Consumption	DC <17.6 W / PoE <18.2 W
Operating Conditions	-22 °F ~ 140 °F (-30 °C ~ 60 °C), \leq 95% RH (Non-Condensing)
Lightning / Surge Protection	6000 V Lightning, Surge, and Voltage Transient Protection
Housing Material	Main Body: Aluminum Alloy Decoration: Plastic
Ingress / Impact Protection	IP67 Weather Resistance / IK10 Impact Rating
Certifications	CE, FCC, IP67
Environmental Compliance	RoHS, REACH, WEEE, Directive 94/62/EC
Warranty	3 Years
Weight	4.63 lb (2.1 kg)
Dimensions (L x W x H)	11.35" x 6.29" x 5.42" (288.4 x 159.7 x 137.8 mm)

*Research local, state and federal laws regarding the implementation of audio surveillance.



DIMENSIONS



OPTIONAL MOUNTS & ACCESSORIES



VT-TJB010-W
Included Junction
box for cable
management.



VT-TCNMT-W
Corner Mount Adapter
(VT-TJB010-W Req'd)



VT-TPLMT-W
Pole Mount Adapter
(VT-TJB010-W Req'd)

CABLE CONNECTIONS



Alarm, 12VDC Input, Audio I/O*, Ethernet (PoE)

BREAKDOWN OF MODEL NUMBERS: EXAMPLE: VTC-TNB8X4MSN

[VTC]	[T]	[N]	[B]	[8]	[X]	[4]	[M]	[S]	[N]
VITEK	TRANSCENDENT	Network	Bullet	8	Multiplied	4	Multi	Sensor	NDAA
Camera				Megapixel	by	Sensors			Compliant