

VTC-THB5R3/2

Transcendent Series 5 MegaPixel Indoor/Outdoor 4-in-1
Multiformat Fixed Bullet Camera



KEY FEATURES

- 1/2.7" 5.0 Megapixel Progressive Scan CMOS Image Sensor
- High Definition-over-Coax: HD-TVI & AHD: 5.0 MegaPixel / CVI: 4.0 MegaPixel / CVBS: 960H Video Output
- Available with 3.6mm (VTC-THB5R3) or 2.8mm Fixed Lens (VTC-THB5R2)
- Matrix IRs with up to 100' IR Range
- Digital Wide Dynamic Range (D-WDR)
- True Mechanical Day/Night function by ICR
- DNR Digital Noise Reduction
- IP67 Weather Resistance
- Supports Control Over COAX [CoC]
- Over 1500' HD Video Transmission (depending on cable characteristics and integrity)
- Optional Junction Box (VT-TJB08), Universal Pole Mount Adapter VT-TPLMT (reqs. VT-TJB08), Universal Corner Mount Adapter VT-TCNMT (reqs. VT-TJB08)
- 12VDC Operation
- 3-Year Warranty



CABLE CONNECTIONS
12VDC Power Output, CVBS Output, Signal Switch



HD
ANALOG COAX

CONTROL
OVER COAX

MULTI
FORMAT

NDA
COMPLIANT



TRANSCENDENT



HD OVER COAX



MULTI-FORMAT



5 MEGAPIXEL



MATRIX IR LED ILLUMINATION



FIXED IRIS LENS

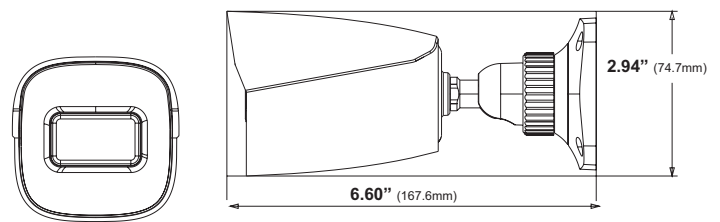


TRANSCENDENT SERIES NDA COMPLIANT HD-OVER-COAX CAMERAS

Transcendent Series High Definition HD-TVI, AHD, CVI, and CVBS 4-IN-1 Cameras deliver up to 5.0 MegaPixel resolution and offer unprecedented performance and value. These simple, easy to install, attractively styled, analog HD Cameras transmit over new or existing Coaxial cable at distances up to 1500'.



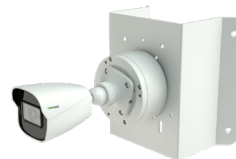
Pair with one of several VITEK Transcendent Series Network or Digital Recorders offering a Myriad of Advanced Analytic Functions and Applications! See www.vitekccv.com for More!



VT-TJB08
Optional Junction Box for Cable Management

VT-TCNMT
Universal Corner Mount Adapter - reqs. VT-TJB08

VT-TPLMT
Universal Pole Mount Adapter - reqs. VT-TJB08



An Eye On
Innovation

www.vitekccv.com

V1.0 11.30.23



DETAILED SPECIFICATIONS



| | |
|-------------------------------------|------------------------------------------------------------------------------------------------------------------------------------------------------------------|
| Image Sensor | 1/2.7" 5.0 Megapixel Progressive Scan CMOS Sensor |
| Signal System | PAL / NTSC |
| Effective Pixels | 2560 × 1936 |
| Resolution | HD-TVI & AHD: 5MP@20fps, 4MP@30fps High Resolution / CVI: 4.0 MegaPixel / CVBS: 960H |
| Video Output | HD-TVI / AHD / CVI / CVBS (Selectable) |
| Frame Rate | 5MP@20fps, 4MP and below@30fps |
| Lens | 3.6 or 2.8mm Fixed Lens |
| Angle Adjustment | Wall Mount: Pan: 0°~180°, Tilt:0°~90°, Rotation: 0°~180°, Ceiling Mount: Pan: 0°~360°, Tilt:0°~90°, Rotation: 0°~180° |
| Electric Shutter | Auto |
| Day/Night | True Day / Night by ICR |
| Min. Illumination | Color: 0.01 lux@F1.2, AGC ON / B/W: 0 lux (with IR ON) |
| IR LEDs | 1 Matrix IR |
| IR Distance | Up to 100' |
| S/N Ratio | ≥52dB (AGC OFF) |
| WDR | D-WDR |
| Other Features | Backlight Correction, Highlight Correction, Lens Shading, Mirror, Auto Gain Control, Sharpness, Smart IR, Image Setting, Saturation, Contrast, Defect Correction |
| Digital Noise Reduction | Digital DNR |
| White Balance | Auto (AWB) |
| Control over COAX (COC) | YES |
| Transmission Distance | Up to 1500' (Depending on cable characteristics & integrity) |
| Power Input | 12VDC |
| Power Consumption mA (12VDC) | IR Off: 100mA / IR On: 350mA |
| Power Consumption W (12VDC) | IR Off: <1W / IR On <4W) |
| Ingress Protection | IP67 |
| Operation Conditions | -22°F ~ 140°F (-30°C ~ 50°C), 10 % ~ 90 % Relative Humidity |
| Weight (Net) | 13.40oz / .84lb / 380g |
| Weight (Shipping) | 18.34oz / 1.15lb / 520g |
| Dimensions L × W × H | 6.60" × 2.93" × 2.93" (167.6mm × 74.5mm × 74.5mm) |
| Operating Languages | 13 Available |