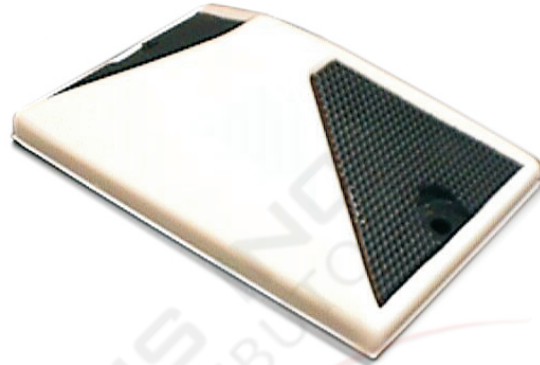


DESCRIPTION

The Verifact™ Model L-DT is a desktop microphone that is designed for conducting interviews or similar applications. It contains two electret condenser microphones facing opposite directions that are mounted in a sturdy ABS plastic housing. Housing contains a weighted non-slip bottom for adherence to a desktop or flat surface. The Verifact™ L-DT is compatible with all Louroe Audio Base Stations.



MODEL L-DT DESKTOP MICROPHONE

APPLICATION

When part of a Louroe Audio Monitoring System, Model L-DT Microphone can be used in situations such as:

- Interview Rooms
- Speech Therapy Labs
- Cashier Booths
- Information Counters
- Where ceiling and wall mountings are not practical

WIRING REQUIREMENTS

2 Conductor **shielded** cable, 22 gauge with a 24 gauge drain wire

NOTE: Unshielded cable is not satisfactory for audio systems

West Penn 452 or equivalent



FEATURES

- Two opposing built-in microphones
- Low impedance, omni-directional pattern
- Contains pre-amp for line level output
- ABS Housing for long endurance
- May be located up to 1,000' from Louroe Base Station
- Weighted, non-slip bottom for firm adherence to desktop or any flat horizontal surface

SPECIFICATIONS

▪ Sensitivity (microphone & preamp)	80 dB SPL input provides 0.254V RMS
▪ Frequency response	40 Hz to 15 kHz ± 1 dB
▪ Output	Line Level (0 dB @ 1000Ω)
▪ Current drain	4 mA
▪ Supply voltage	12 Vdc
▪ Output impedance	600Ω unbalanced
▪ Microphone housing	High impact ABS
▪ Dimensions	4 3/4"L x 3"W x 1 3/4"H
▪ Weight (net)	0.5 Lbs (0.2 Kg)

IMPORTANT NOTICE

When this equipment is used as part of an audio monitoring system, the law requires that the public be given notice of AUDIO MONITORING ON THE PREMISES. A decal notice is included with each microphone shipped.



Federal Law References:
Federal Regulations, US Code, Title 18.
Crime and Criminal Procedure, Sec 2510.

