



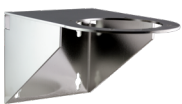
Explosion Proof Network

TNO-X6072EPT1-Z

2MP Network Explosion Proof Fixed Camera



Accessories (Optional)



HT-SD-WM
Wall Mount Bracket



HT-SPMA-SD
Pole Mount Bracket



HT-SD-FP
Protection Cable
(Supplied with camera unit)



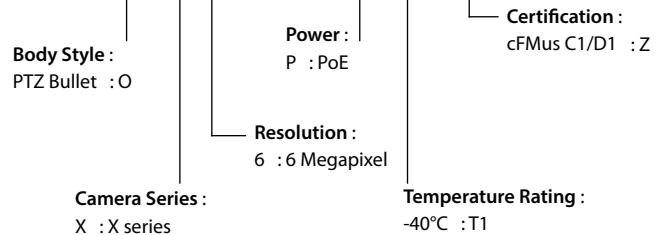
HT-SD-CM
Corner Mount Bracket

Key Features

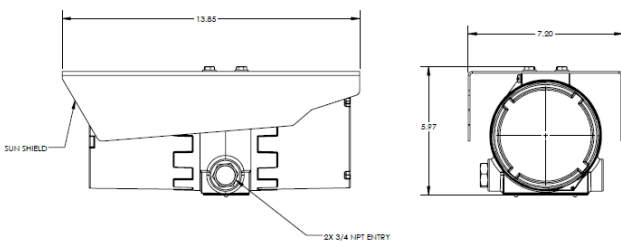
- 2MP (1920 x 1080) resolution
- 2.8 - 9mm Auto-Iris, P-Iris Lens
- H.265, H.264, MJPEG codec support
- Multiple streaming, WiseStreamII support
- Day & Night (ICR), WDR (150dB)
- DIS with Built-in Gyro sensor
- Dual SD Memory slots (Maximum 2 x 256GB)
- Hazardous Rated for Class I II III Division 1 Groups B, C, D, E, F, G cFMus Approved and II 2 G Ex db IIB+H2 II 2 D Ex tb IIIC IECEX ATEX certified
- Powder-coated aluminum housing

Model Number

TNO-X6072EPT1-Z



Dimensions



TNO-X6072EPT1-Z

2MP Network Explosion Proof Fixed Camera

Specifications

| VIDEO | |
|----------------------------------|---|
| Imaging Device | 1/2.8" 2MP CMOS |
| Total Pixels | 1,945(H) x 1,109(V) 2.16MP |
| Effective Pixels | 1,945(H) x 1,109(V) 2.13MP |
| Scanning System | Progressive Scan |
| Minimum Illumination | Color: 0.01Lux (1/30 sec, F1.2) , B/W: 0.001Lux (1/30 sec, F1.2) |
| S/N Ratio | 50dB |
| Video Out | CVBS: 1.0Vpp / 75Ω composite, 720 x 480, for installation, USB: Micro USB Type B, 1280x720 for installation |
| LENS | |
| Focus Control | Simple focus / Manual, Remote control via network, Button control (Manual, Simple focus) |
| Lens Type | Manual / DC auto Iris, P-Iris, C/CS lens mount |
| Focal Length / Angular FoV | 2.8 - 9mm / 98° (Wide) ~ 39° (Tele) |
| OPERATIONAL | |
| Camera Title | Off/On (Displayed up to 85 characters) - English / Numeric / International characters / Special characters - Common: Multi-line (Max. 5), Color (Grey / Green / Red / Blue / Black / White), Transparency, Auto scale by resolution |
| Day & Night | Auto (ICR) / Color / B/W / External / Schedule |
| Backlight Compensation | Off / BLC / HLC (Masking / Dimming), WDR |
| Wide Dynamic Range (WDR) | 150dB |
| Contrast Enhancement | SSDR (Off / On) |
| Digital Noise Reduction | SSNRV (2D + 3D noise filter) (Off / On) |
| Digital Image Stabilization | Off / On (Built-in Gyro sensor) |
| Defog | Off / Auto (Input from fog detection) / Manual |
| Motion Detection | Off / On (8ea, 8point polygonal zones), Handover |
| Privacy Masking | Off / On (32ea, Polygonal) - Color: Grey / Green / Red / Blue / Black / White, Mosaic |
| Gain Control | Off / Low / Middle / High / Manual |
| White Balance | ATW / AWC / Manual / Indoor / Outdoor (Included mercury & sodium) |
| Contrast | Level adjustment |
| LDC (Lens Distortion Correction) | Off / On (5 levels with minimum / maximum) |
| Electronic Shutter Speed | Minimum / Maximum / Anti flicker (2 ~ 1/12,000sec) |
| Digital PTZ | 24x, Digital PTZ (Preset, Group) |
| Flip / Mirror | Off / On, Hallway view: 90° / 270° |
| Video & Audio Analytics | Tampering, Loitering, Directional detection, Defocus detection, Fog detection, Virtual line, Enter / Exit, (Dis)Appear, Audio detection, Face detection, Motion detection, Digital auto tracking, Sound classification |
| Alarm I/O | Input 1ea / Output 1ea |
| Remote Control Interface | RS-485 |
| RS-485 Protocol | Samsung-T/E, Pelco-P/D, Sungjin, Panasonic, Honeywell, AD, Vicon, GE, Bosch |
| Alarm Triggers | Alarm input, Motion detection, Video & Audio analytics, Network disconnect |
| Alarm Events | File upload via FTP and E-Mail, Notification via E-Mail, Local storage (SD/SDHC/SDXC) or NAS recording at alarm triggers, External output, DPTZ preset |
| Pixel Counter | Support |

TNO-X6072EPT1-Z

| NETWORK | |
|-----------------------------------|---|
| Ethernet | RJ-45 (10/100 BASE-T) |
| Video Compression Format | H.265 / H.264 (MPEG-4 part 10/AVC): Main / Baseline / High, MJPEG |
| Resolution | 1920 x 1080, 1280 x 1024, 1280 x 960, 1280 x 720, 1024 x 768, 800 x 600, 800 x 448, 720 x 576, 720 x 480, 640 x 480, 640 x 360, 320 x 240 |
| Maximum Framerate | H.264 / H.265 : Max. 60fps at all resolutions, MJPEG : Max. 30fps |
| Smart Codec | Manual mode (Area-based: 5ea) |
| WiseStream II | Support |
| Video Quality Adjustment | H.265 / H.264 : Target bitrate level control, MJPEG : Target bitrate level control |
| Bitrate Control Method | H.265 / H.264 : CBR or VBR, MJPEG : VBR |
| Streaming Capability | Multiple Streaming (Up to 10 profiles) |
| Audio In | Selectable (Micorphone in / Line in), Maximum output level: 1 Vrms Supply voltage: 2.5V DC (4mA), Input impedance: approx. 2K Ohm |
| Audio Out | Line out, Maximum output level: 1 Vrms |
| Audio Compression Format | G.711 u-law/G.726 selectable, G.726 (ADPCM) 8KHz, G.711 8KHz G.726 : 16Kbps, 24Kbps, 32Kbps, 40Kbps, AAC-LC : 48Kbps at 8/16/32/48KHz |
| Audio Communication | Bi-directional (2-way) |
| IP | IPv4, IPv6 |
| Protocol | TCP/IP, UDP/IP, RTP(UDP), RTP(TCP), RTCP, RTSP, NTP, HTTP, HTTPS, SSL/TLS, DHCP, PPPoE, FTP, SMTP, ICMP, IGMP, SNMPv1/v2c/v3(MIB-2), ARP, DNS, DDNS, QoS, PIM-SM, UPnP, Bonjour |
| Security | HTTPS (SSL) login authentication, Digest login authentication IP address filtering, User access log, 802.1X authentication (EAP-TLS, EAP-LEAP) |
| Streaming Method | Unicast / Multicast |
| Maximum User Access | 20 users at unicast mode |
| Edge Storage | SD/SDHC/SDXC 2 slots (Up to 512GB) - Continuous recording (1st slot to 2nd slot) NAS (Network Attached Storage), Local PC for instant recording |
| Application Programming Interface | ONVIF Profile S/G, SUNAPI (HTTP API), Wisenet Open Platform |
| Webpage Language | English, Korean, Chinese, French, Italian, Spanish, German, Japanese, Russian, Swedish, Portuguese, Czech, Polish, Turkish, Dutch, Hungarian, Greek |
| Web Viewer | Supported OS : Windows 7, 8.1, 10, Mac OS X 10.10, 10.11, 10.12 Plugin-Free Webviewer Supported Browser : Google Chrome 54, MS Edge 38, Mozilla Firefox (49Windows 64bit only), MS Internet Explorer 11, Apple Safari 9 *Mac OS X only |
| Central Management Software | Wisenet WAVE, SmartViewer, SSM |
| ENVIRONMENTAL | |
| Operating Temperature PoE only | -40°C ~ +60°C (-40°F ~ +140°F) USA, -50°C ~ +60°C (-58°F ~ +140°F) Canada |
| Operating Temperature PoE only | -10°C ~ +55°C (+14°F ~ +131°F) |
| Storage Temperature / Humidity | -50°C ~ +60°C (-58°F ~ +140°F) / Less than 90% RH |
| Ingress Protection | Type 4x / IP66 |
| ELECTRICAL | |
| Input Voltage | Camera : PoE (IEEE802.3af) / Heater : 12-24v DC |
| Power Consumption | Camera : Maximum 7.5W (PoE) / Heater : 25W |
| MECHANICAL | |
| Color / Material | RAL2000-Yellow Orange / Powder-coated Aluminum |
| Dimensions (WxHxD) | 7.2" x 5.97" x 13.85" |
| Weight | 14lb (6.35kg) |
| CERTIFICATION | |
| Certified Model Number | F103-XNB-6000-BD |



MADE IN USA
CERT. NO. FM18US0262X & FM18CA0126X
MODEL: F103-XNB-6000-BD
INPUT: IEEE802.3af, 7.5 W;
HEATER: 12-24VDC/VAC, 25 W



FABRICADO NO EUA
CERT. NO. NCC 20.0084 X
MODELO: F103-XNB-6000-BD
ALIMENTAÇÃO: IEEE802.3af, 7.5 W;
AQUECEDORA: 12-24VDC/VAC, 25 W



US: Class I Division 1 Groups BCD T6 Ta = -40°C to +55°C, Type 4X, IP66
Class II/III Division 1 Groups EFG T6 Ta = -40°C to +55°C, Type 4X, IP66
Canada: Class I Division 1 Groups BCD T6 Ta = -50°C to +55°C, Type 4X, IP66
Class II/III Division 1 Groups EFG T6 Ta = -50°C to +55°C, Type 4X, IP66
Class I, Zone 1, AEx/Ex db IIB+H2
Zone 21, AEx/Ex db IIC T85°C Db Ta = -50°C to +55°C, Type 4X, IP66
II 2 G Ex db IIB+H2
II 2 D Ex db IIC T85°C Db Ta = -50°C to +55°C, IP66
CERT. NO. FM18AEX0073X, IECEx FMG 18.0029X, & FM22UKEX016X



NCC 20.0084 X
Ex db IIB+H2 T5 Gb Ta = -50°C to +55°C, IP66
Ex tb IIC T85°C Db Ta = -50°C to +55°C, IP66

WARNING: DO NOT OPEN UNLESS YOU ARE QUALIFIED TO DO SO. ALWAYS DISCONNECT FROM MAIN BY FIRST: unplug and within 18 inches. For Zone 1, install seal of entry. WARNING - POTENTIAL ELECTROSTATIC CHARGING HAZARD - SEE INSTRUCTION USER BPC OR HIGHER RATED CONNECTIONS.
AVERTISSEMENT: NE PAS OUVRIER L'ÉQUIPE ÉLECTRIQUE QU'ON NE SOIT QUALIFIÉ POUR LE FAIRE. Présentez, les joints de zone 1, installer le joint d'étanchéité à l'entrée. Pour les zones 1, installer un joint à l'entrée. AVERTISSEMENT: RISQUE DE CHARGE ÉLECTROSTATIQUE POTENTIEL. VOIR LES INSTRUCTIONS. UTILISER DES CONDUCTEURS COTÉS DE 80°C OUFPLUS.

ATENÇÃO: NÃO ABRA EQUIPAMENTO ENERGIGADO OU QUANDO A TEMPERATURA EXPLORADA PODE ESTAR PRESENTE. INSTALAR O ANEL DE VITIFICAÇÃO DE BARRA. ATENÇÃO - RISCO POTENCIAL DE CARGA ELETROESTÁTICA - VER INSTRUÇÕES USAR CONECTOR PARA ADEQUADOS PARA TEMPERATURAS ATÉ 80°C. ATENÇÃO - NÃO ABRIR QUANDO ENERGIGADO. ATENÇÃO - RISCO POTENCIAL DE CARGA ELETROESTÁTICA - VER INSTRUÇÕES.