



18-Port Multi-Gig Web Smart Switch

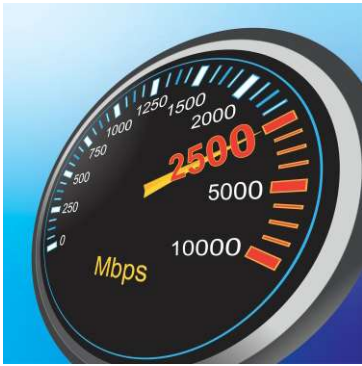
TEG-3182WS (v1.xR)

- 16 x 2.5G ports
- 2 x 10G SFP+ ports
- Backwards compatible with 100/1000BASE-T devices
- Easy-to-use web-based management interface
- Remote cloud management with TRENDnet Hive (Additional fee may apply)
- Supports IPv6, LACP, VLAN, QoS, and IGMP Snooping
- Bandwidth control per port
- Private, Multicast, and Voice VLAN support
- 120Gbps switching capacity
- IEEE 802.3bz (2.5G) compliant
- IEEE 802.3ae (SFP+) compliant
- Lifetime Warranty
- NDAA / TAA compliant (U.S. and Canada only)

TRENDnet's 18-Port Multi-Gig Web Smart Switch, model TEG-3182WS, offers advanced L2+ features with enhanced traffic management controls to meet the evolving demands of today's SMB networks. This rack-mountable IPv6-ready managed switch comes with an intuitive web-based interface. Advanced managed switch features include LACP to increase bandwidth between switches by grouping ports together, VLANs for segmenting and isolating virtual LAN groups, QoS for traffic prioritization, port bandwidth controls, and SNMP monitoring. Improve voice performance by isolating and prioritizing VoIP traffic from normal data traffic with an easy-to-use voice VLAN feature.

Easily manage and configure this web smart managed switch remotely with access to TRENDnet Hive. TRENDnet Hive is a network cloud manager that reduces management time and cost. This cloud managed switch requires no additional hardware, server, or personal cloud with TRENDnet's reliable cloud service.

The TEG-3182WS multi-gig managed switch comes equipped with 2.5G RJ-45 ports that provide higher than gigabit speeds capable of up to 2.5Gbps over your existing Cat5e or better cabling. This multi-gig managed switch also offers two dedicated 10G SFP+ ports for high-speed network connections, providing a cost-effective solution in adding 10G link capability to an SMB network. The fanless design lowers energy consumption, and eliminates operating noise. TRENDnet's reliable 2.5G managed switch with 10G SFP+ ports offers a cost-effective solution to increase your network's throughput.



2.5G Ports

Equipped with 16 high-speed 2.5G RJ-45 ports that provide multi-gigabit speeds capable of up to 2.5Gbps over existing Cat5e or better cabling.



10G SFP+ Ports

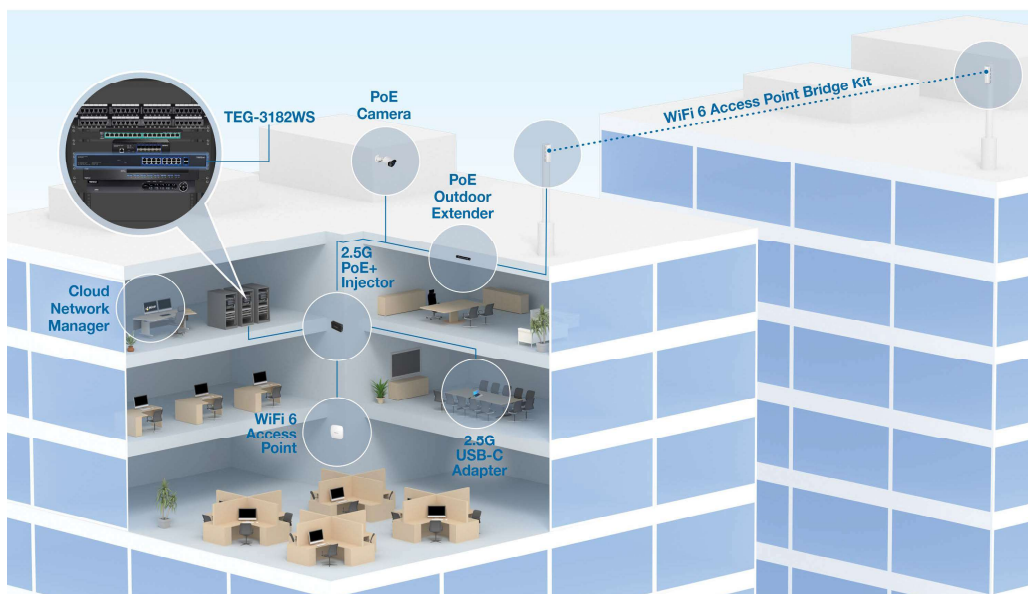
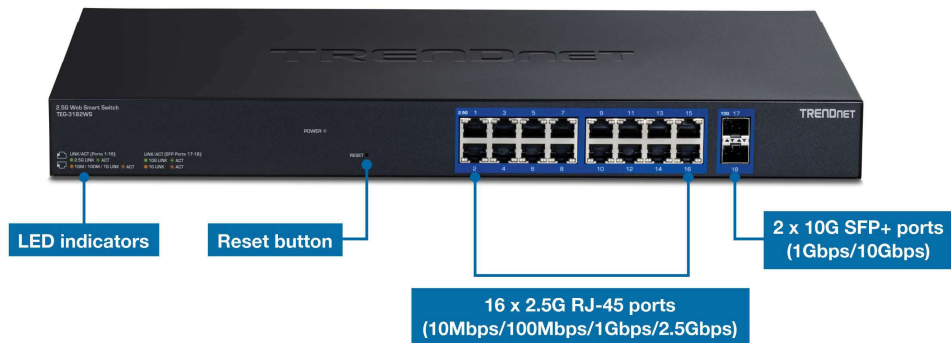
Offers two ultra-fast 10G SFP+ ports for high-speed network connections, providing a cost-effective solution in adding 10G link capability.



Web Smart Management

Provides an easy-to-use web-based GUI management for reduced switch configuration complexity, and offers a combination of SMB management features for easy deployment.

NETWORKING SOLUTION



FEATURES



2.5G Ports

Equipped with 16 2.5G RJ-45 ports that provide higher than gigabit speeds capable of up to 2.5Gbps over existing Cat5e or better cabling



10G SFP+ Ports

Offers 10G fiber SFP+ ports for high-speed network connections, providing a cost-effective solution in adding 10G link capability



Hive Enabled

Remotely manage, configure, and diagnose this web smart switch via TRENDnet's cloud service (Additional fee may apply)



Traffic Management

A broad range of network configurations are supported by: 802.3ad link aggregation, Asymmetric VLAN, 802.1Q VLAN, Voice VLAN, RSTP, MSTP, Loopback Detection, GVRP, 802.1p Class of Service (CoS), port bandwidth management, and QoS queue scheduling



IPv6 Ready

This 2.5G managed switch supports IPv6 configuration and IPv6 neighbor discovery



Troubleshooting

A convenient cable diagnostic test and traffic statistics aid in network troubleshooting



Access Control

This 2.5G managed switch includes advanced features, such as ACL, SSL, MAC/port filtering, 802.1X, TACACS+, and RADIUS



Monitoring

RMON, SNMP, SNMP Trap, and Port Mirroring support administrator monitoring solutions



Web Smart Management

The 2.5G managed switch provides an easy-to-use web-based GUI management for reduced switch configuration complexity, and offers a combination of SMB management features for easy deployment



Housing Design

Sturdy metal housing



Jumbo Frame

Sends larger packets, or Jumbo Frames (up to 12KB), for increased performance



LED Indicators

LED indicators on this 2.5G managed switch convey port status



Integration Flexibility

Advanced managed features on this 2.5G managed switch include access control lists, VLAN, IGMP snooping, QoS, RMON, SNMP trap, and syslog for monitoring and flexible network integration

SPECIFICATIONS

Standards

- IEEE 802.1d
- IEEE 802.1p
- IEEE 802.1Q
- IEEE 802.1s
- IEEE 802.1w
- IEEE 802.1X
- IEEE 802.1ab
- IEEE 802.3
- IEEE 802.3u
- IEEE 802.3x
- IEEE 802.3z
- IEEE 802.3ab
- IEEE 802.3ad
- IEEE 802.3ae
- IEEE 802.3az
- IEEE 802.3bz

Device Interface

- 16 x 2.5G RJ-45 ports (10Mbps/100Mbps/1Gbps/2.5Gbps)
- 2 x 10G SFP+ ports (1Gbps/10Gbps)
- LED indicators
- Reset button

Data Transfer Rate

- Ethernet: 10Mbps (half duplex), 20Mbps (full duplex)
- Fast Ethernet: 100Mbps (half duplex), 200Mbps (full duplex)
- Gigabit Ethernet: 2Gbps (full duplex)
- 2.5G Ethernet: 5Gbps (full duplex)
- Gigabit SFP: 2Gbps (full duplex)
- 10G SFP+: 20Gbps (full duplex)

Performance

- Switching fabric: 120Gbps
- RAM Buffer: 1.5MB
- MAC Address Table: 16K entries
- Jumbo Frames: 12KB
- HOL Blocking Prevention
- Forwarding rate: 89.28 Mpps (64-byte packet size)

Spanning Tree

- IEEE 802.1D STP
- IEEE 802.1w RSTP
- IEEE 802.1s MSTP

Management

- CLI (Telnet / SSHv2) limited administration only
- HTTP/HTTPS (SSL v2/3 TLS) Web based GUI
- SNMP v1, v2c, v3
- RMON v1
- Static Unicast MAC Address
- Enable/disable 802.3az Power Saving
- LLDP
- Virtual Cable Diagnostics Test
- IPv6: IPv6 Neighbor Discovery, IPv6 Static IP, DHCPv6, Auto configuration
- Dual image
- Dual configuration
- TC Root/Protect
- Ping Watch Dog
- DHCP relay/option 82

Hive Cloud Management

- Configure, monitor, and manage through the TRENDnet Hive Cloud Management Portal remotely via PC or Mac web browser
- Multi-device management
- Provisioning through scheduled batch firmware or configuration updates for multiple switches
- Event/hardware network monitoring (CPU/memory utilization)
- Configure features such as IP address settings, VLANs, spanning tree, loopback detection, IGMP snooping, link aggregation, and bandwidth control through cloud management

MIB

- IP FORWARD TABLE MIB RFC 1354
- IPV6 MIB RFC 2465
- GVRP MIB IEEE 802.1Q-VLAN
- LA MIB IEEE 802.3ad
- LLDP MIB IEEE 802.1AB
- SNMP MIB RFC 3415
- STP MIB RFC 4318
- PNAC MIB IEEE 802.1x
- VLAN MIB IEEE 802.1q
- ACL MIB
- BANDWIDTH CTRL MIB
- LBD MIB
- MIRROR MIB
- IPV6 NEIGHBOR MIB
- SNTP MIB
- STORM CTRL MIB
- STATISTICS MIB
- Tool MIB
- VOICE VLAN MIB
- DOS MIB

Link Aggregation

- Static Link Aggregation
- 802.3ad Dynamic LACP

Quality of Service (QoS)

- 802.1p Class of Service (CoS)
- DSCP (Differentiated Services Code Point)
- Bandwidth Control per port
- Queue Scheduling: Strict Priority, Weighted Round Robin (WRR)

VLAN

- Multiple management VLAN assignment
- Asymmetric VLAN
- 802.1Q Tagged VLAN
- Dynamic GVRP
- MAC-based VLAN
- Protocol-based VLAN
- Up to 256 VLAN groups, ID Range 1-4094
- Private VLAN (Protected Ports)
- Voice VLAN (10 user defined OUIs)

Multicast

- IGMP Snooping v1, v2
- MLD Snooping v1
- IGMP fast leave*
- MVR (Multicast VLAN Registration)
- Static Multicast Address
- Up to 256 multicast entries

Port Mirror

- RX, TX, or Both
- Many to one

Access Control

- 802.1X Port-Based Network Access Control, RADIUS, TACACS+
- Local Dial In User Authentication
- DHCP Snooping (per VLAN)
- Loopback Detection
- Duplicated Address Detection
- Trusted Host
- Denial of Service (DoS)
- IP MAC port binding
- Dynamic ARP inspection
- Block unknown multicast

ACL IPv4 L2-L4 & IPv6

- MAC Address
- VLAN ID
- Ether Type (IPv4 only)
- IP Protocol 0-255
- TCP/UDP Port 1-65535
- 802.1p
- DSCP (IPv4 only)
- IPv6 Address (IPv6 only)

Layer 3 Features

- IPv4 / IPv6 static routing
- IP interfaces: Up to 8
- Routing table entries: Up to 32 (IPv4 / IPv6)
- ARP table (up to 128 entries)
- Inter-VLAN routing

Compatibility

- Optional Software Utility: Windows® 11 & 10

Power

- Input: 100 - 240 V AC, 50/60 Hz, internal power supply
- Max. Consumption: 14.6 Watts

Fan/Acoustics

- Fanless

MTBF

- 714,000 hours @ 40° C

Operating Temperature

- -5 – 50°C (23 - 122°F)

Operating Humidity

- Max. 95% non-condensing

Dimensions

- 440 x 250 x 44 mm (17.32 x 9.84 x 1.73 in.)
- Rack mountable 1U height

Weight

- 3.05 kg (6.72 lbs.)

Certifications

- CE
- FCC
- UL

Warranty

- Lifetime Warranty

Package Contents

- TEG-3182WS
- Power cord (1.8m/6 ft.)
- Rackmount kit

All references to speed are for comparison purposes only. Product specifications, size, and shape are subject to change without notice, and actual product appearance may differ from that depicted herein.

TRENDnet offers a lifetime warranty for all of its metal-enclosed network switches that have been purchased in the United States/Canada on or after 1/1/2015. Cooling fan and internal power supply carry a one-year warranty.