



SLA-T2480VA

2MP Lens Module for PNM-9000QB



Key Features

- Color: 0.045Lux(F2.0, 1/30sec)
- 2.4mm fixed focal
- Compatible with PNM-9000QB

Compatible Devices



PNM-9000QB



XNB-6002

SLA-T2480VA

2MP Lens Module for PNM-9000QB



Specifications

Video

| | | |
|-------------------------|-----------------------|--------|
| Imaging Device | Size | 1/2.8" |
| | Type | CMOS |
| Min. Illumination (Lux) | Color(1/30sec, 30IRE) | 0.45 |
| | BW(1/30sec, 30IRE) | 0.045 |

Lens

| | | |
|--------------------------------|------------|-------------------------------|
| Focal Length (mm) | | 2.4 |
| Max. Aperture Ratio (F number) | Wide | 2.0 |
| Angular Field of View | Horizontal | 138° |
| | Vertical | 73° |
| | Diagonal | 165° |
| Mount Type | | RJ12 connected with main unit |
| Focus Control | | Fixed |

Mechanical

| | |
|--------------------|-----------------|
| Color | Black |
| Material | Plastic, Metal |
| Product Dimensions | W30xH27.9xD45mm |
| Product Weight | 328g |

SLA-T2480VA

2MP Lens Module for PNM-9000QB

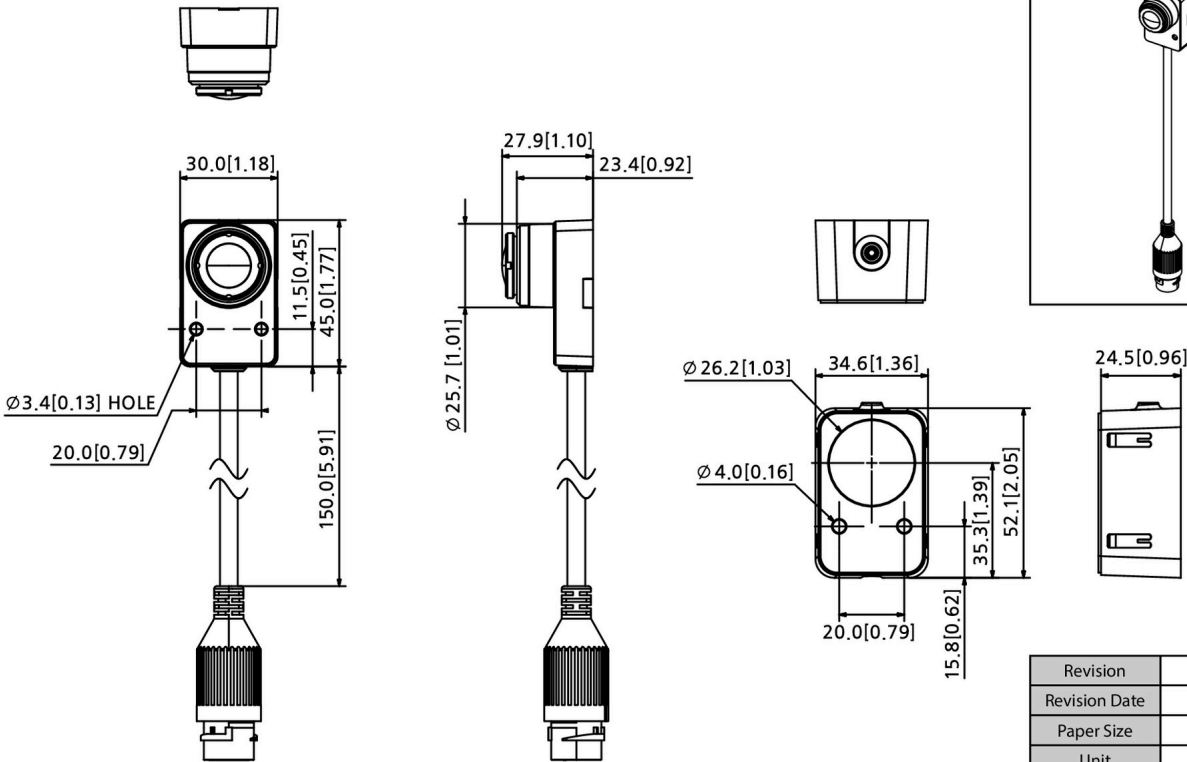
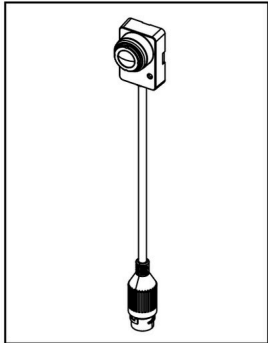


CAD

Unit: mm [inch]

SLA-T2480VA 2MP Lens Module for PNM-9000QB

Reference image



© Hanwha Vision Co., Ltd. All right reserved.

| | |
|---------------|-----------|
| Revision | V1.3 |
| Revision Date | 25/05/29 |
| Paper Size | A3 |
| Unit | mm [inch] |
| Scale | 1 : 1 |