

SBP-300BW1

Wall Mount Bracket



Key Features

- Weight : 700g(1.54lb)
- Material : Aluminum
- Mount screw size: TR30
- Conduit hole: 19.1mm

Compatible Devices



TNO-718ORLP

SBP-300BW1

Wall Mount Bracket



Specifications

Mechanical	
Color	White
Material	Aluminum
RAL code	RAL9003
Product dimensions / weight	120x190.9x35mm / 700g
Conduit hole	19.1mm(3/4")(M25)
Supported products	TNO-7180RLP, SBP-300WMW, SBP-300MMW1 ※ For further compatible models, please visit our website or use Toolbox

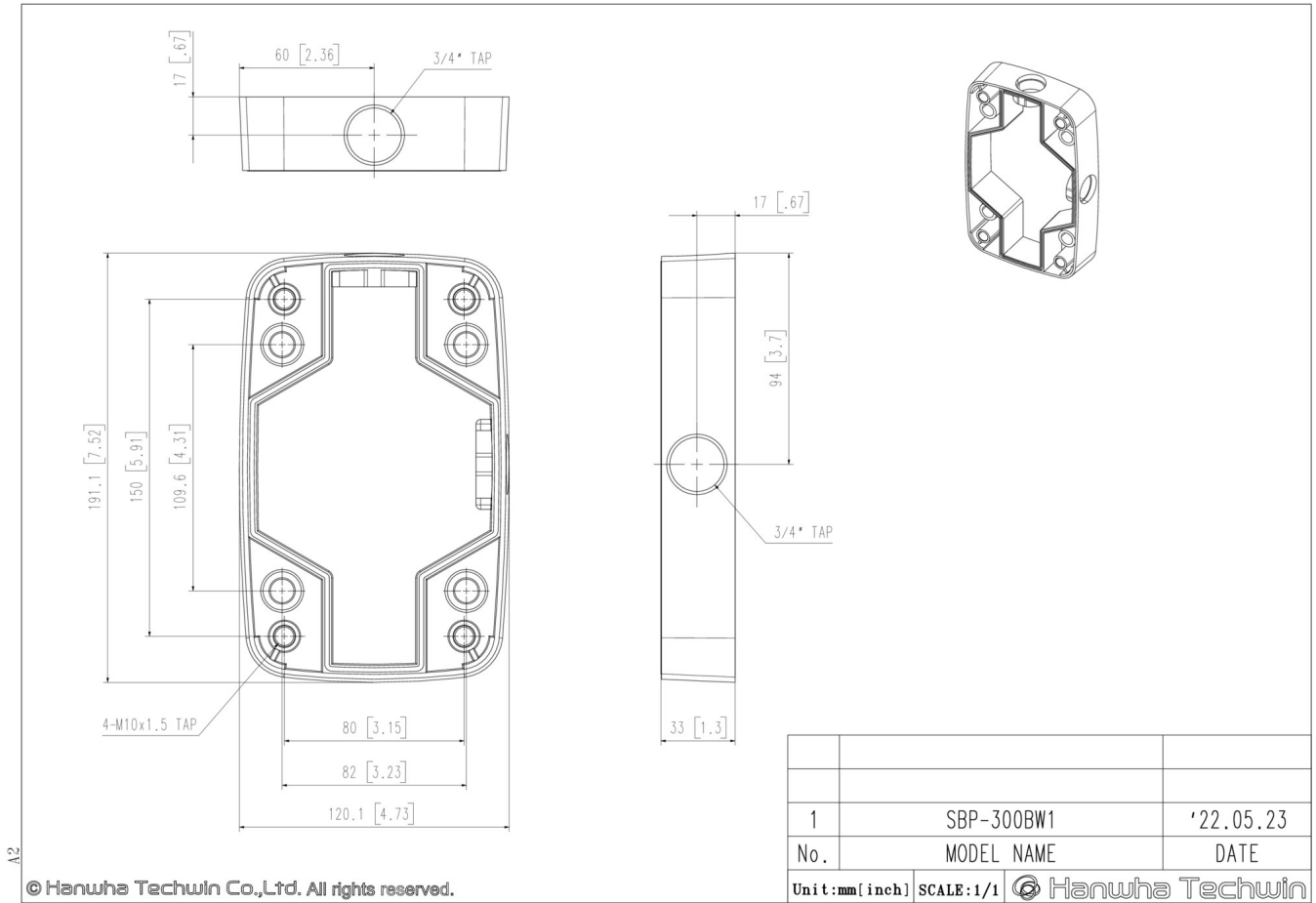
SBP-300BW1

Wall Mount Bracket



CAD

Unit: mm [inch]



© Hanwha Techwin Co., Ltd. All rights reserved.