

SBP-156KMW

Corner Mount Adapter (White)



Key Features

- Compatible with Wisenet PTZ Plus Models including: XNP-9300RW/8300RW/6400RW
- Made of aluminum, 1.68lb
- Dimensions : 276.8(W)x183.0(H)x158.5(D)mm (10.90x7.20x6.24")

SBP-156KMW

Corner Mount Adapter (White)

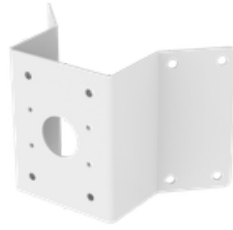


Specifications

Mechanical	
Color	White
Material	Aluminum
RAL code	RAL9003
Product dimensions / weight	276.8x183x158.5mm / 763g
Max. load	20kg
Supported products	SBP-156WMW, SBP-250WMW, SBP-400WMW ※ For further compatible models, please visit our website or use Toolbox

SBP-156KMW

Corner Mount Adapter (White)



CAD

Unit: mm [inch]

