



# SBP-150NBW

Cabinet



## Key Features

- Operating Temperature: -40°C~+65°C (-40°F~+149°F) / 0~100% RH (condensing)
- Material: PC (Polycarbonate), Aluminum
- Dimensions : 360x420x163.1mm
- Weight : 3,960g
- Color : White
- Max. load: 15kg
- Certification: IP66, IK10, NEMA 4X

## Compatible Devices



SBP-250WMW



SBP-156WMW



SBP-400WMW



SBP-150PMW



XND-C6083RV



PNV-A9081R



XNO-6083R



QNV-C8083R

# SBP-150NBW

Cabinet



## Specifications

### Environmental

Operating Temperature / Humidity	-40°C~+65°C / 0~100% RH (condensing), Humidity control /w Air vent
Certification	IP66, IK10, NEMA 4X

### Mechanical

Color	White
Material	PC(Polycarbonate), Aluminum
RAL code	RAL9003
Product dimensions / weight	360x420x163.1mm / 3,960g
Mount Screw size	TR20, T30
Max. load	15kg
Conduit hole	12.7mm(1/2")(M20), 19.1mm(3/4")(M25)
Supported products	SBP-250WMW, SBP-400WMW, SBP-150PMW, XND-C6083RV, PNV-A9081R, XNO-6083R, QNV-C8083R ※ For further compatible models, please visit our website or use Toolbox

# SBP-150NBW

Cabinet

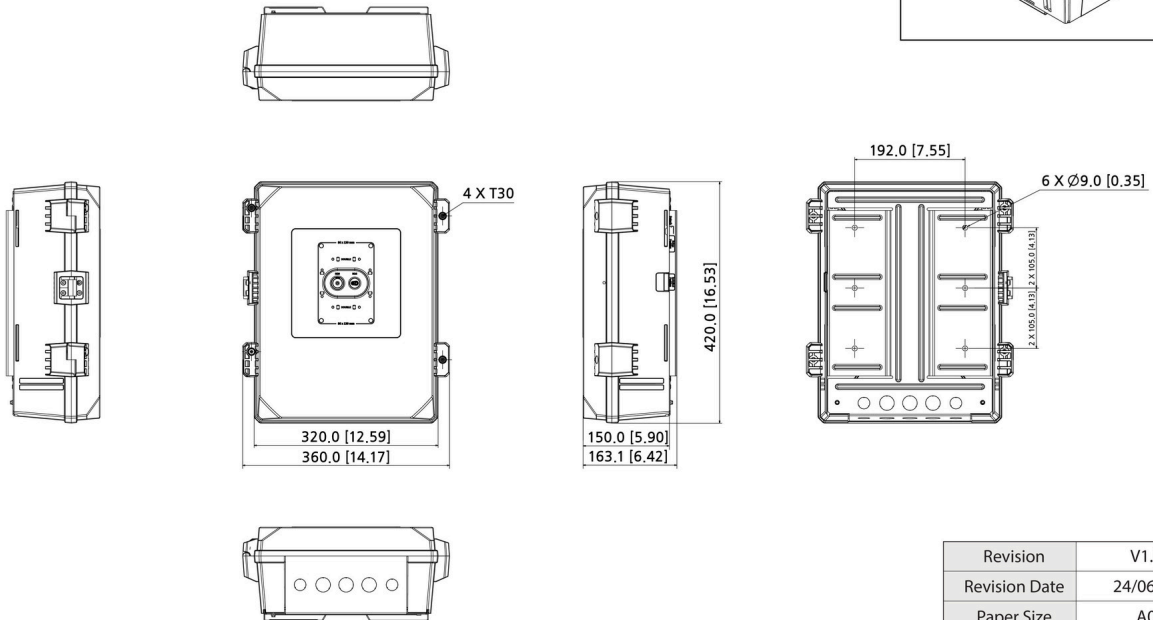
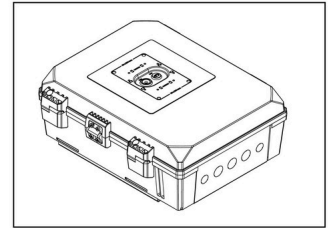


CAD

Unit: mm [inch]

## SBP-150NBW Cabinet

Reference image (No scale applied)



Revision	V1.0
Revision Date	24/06/27
Paper Size	A0
Unit	mm [inch]
Scale	1 : 2

© Hanwha Vision Co., Ltd. All right reserved.