

SBP-115PA

3 shaft Adaptor for Wall&Pole Mount



Key Features

- Color : White
- Mount screw size : TR30
- Dimensions : $\phi 125 \times 27.7$ mm
- ※ Totally 3pcs included on package

SBP-115PA

3 shaft Adaptor for Wall&Pole Mount



Specifications

| Mechanical | |
|-----------------------------|---|
| Color | White |
| Material | PC(Polycarbonate), Aluminum |
| RAL code | RAL9003 |
| Product dimensions / weight | ø125x27.7mm / 242g |
| Mount Screw size | TR30 |
| Supported products | SBP-250WMW, SBP-400WMW ※ For further compatible models, please visit our website or use Toolbox |

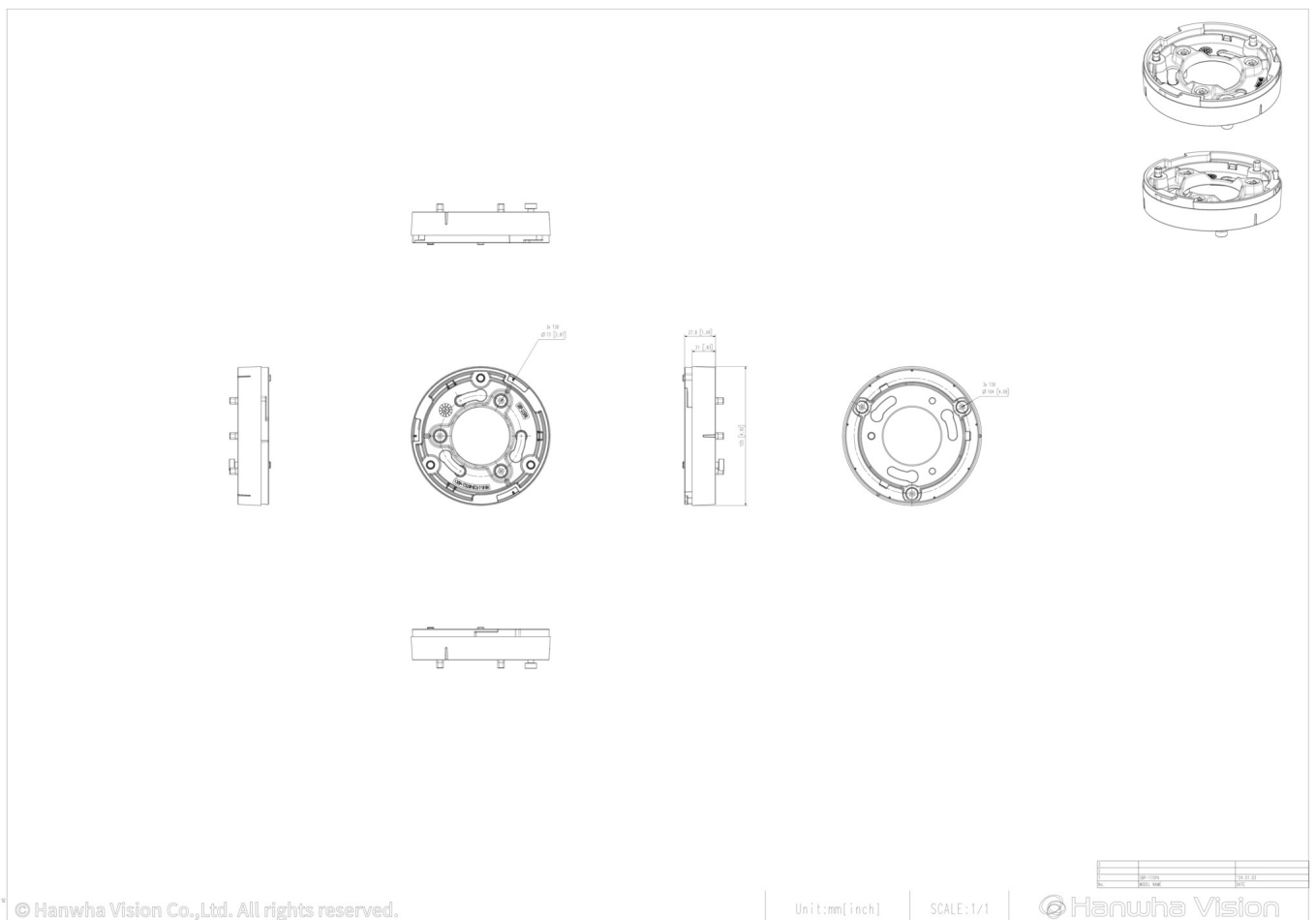
SBP-115PA

3 shaft Adaptor for Wall&Pole Mount



CAD

Unit: mm [inch]



© Hanwha Vision Co.,Ltd. All rights reserved.

Unit:mm[inch]

SCALE:1/1

 Hanwha Vision