



Network

Bullet

# QNO-7082R

4MP IR Bullet Camera



## Key Features

- Max. 4MP resolution
- Color : 0.1Lux (F1.6, 1/30sec), B/W : 0Lux (IR LED On)
- 3.2 ~ 10mm (3.1x) motorized varifocal
- IR viewable length: 30m (98.42ft)
- Day&Night (ICR), WDR (120dB)
- H.265, H.264, MJPEG, Multiple streaming supported
- Motion detection, Tampering, Defocus detection
- Hallway view (90°/270°), LDC support
- Micro SD/SDHC/SDXC memory slot (Max. 128GB)
- IP66, IK10

## Compatible Devices



SBP-302PM



SBO-100B1

# QNO-7082R

4MP IR Bullet Camera



## Specifications

### Video

Imaging Device	Size	1/3"
	Type	CMOS
Resolution	2560x1440, 1920x1080, 1280x960, 1280x720, 800x600, 800x448, 720x576, 720x480, 640x480, 640x360, 320x240	
Max. Framerate	H.265/H.264	30fps/25fps(60Hz/50Hz)
	MJPEG	15fps(@4MP Max. 2fps)
Min. Illumination (Lux)	Color(1/30sec, 30IRE)	0.1
	BW(1/30sec, 30IRE)	0.01
Video Out	CVBS: 1.0 Vp-p / 75Ω composite for installation	

### Lens

Focal Length (mm)	3.2~10	
Zoom Ratio	Optical	3.1x
Max Aperture Ratio (F number)	Wide	1.6
	Tele	2.9
Angular Field of View	Horizontal	99°~30°
	Vertical	53°~17°
	Diagonal	116°~35°
Focus Control	Simple focus	
Lens Type	DC auto iris	

### Pan / Tilt / Rotate

Pan / Tilt / Rotate Range	Pan	0°~360°
	Tilt	0°~100°
	Rotate	0°~360°

### Operational

Day & Night	Auto(ICR)
Backlight Compensation	BLC, WDR, SSSDR
Wide Dynamic Range (dB)	120

## Operational

<b>Digital Noise Reduction</b>		SSNR
<b>Motion Detection</b>	Quantity	4ea
	Shape	8point Polygonal zones
<b>Privacy Masking</b>	Quantity	6ea
	Shape	Rectangular zones
<b>Gain Control</b>		Low, Middle, High
<b>White Balance</b>		ATW, AWC, Manual, Indoor, Outdoor
<b>LDC</b>		Support
<b>Electronic Shutter</b>	Mode	Minimum, Maximum, Anti flicker
	Speed Range	1/5~1/12,000sec
<b>Video Rotation</b>		Flip, Mirror, Hallway view(90°/270°)
<b>Alarm Interface</b>	In/Out	Input 1ea, Output 1ea
<b>Alarm Triggers</b>		Analytics, Network disconnect, Alarm input
<b>Alarm Events When Alarm Trigger Occurred</b>		File upload(image): e-mail/FTP, Notification: e-mail, Recording: SD/SDHC/SDXC or NAS recording at event triggers,Alarm output, Handover: PTZ preset
<b>Audio In</b>		Selectable(mic in/line in)
<b>Light Type</b>		IR LED
<b>Light Viewable Length</b>	IR	30m(98.42ft)
<b>IR Wavelength</b>		850nm

## Analytics

<b>Analytics Events</b>	Normal	Defocus detection, Motion detection, Tampering, Virtual area(Intrusion/Enter/Exit), Virtual line(Crossing, Direction)
-------------------------	--------	---

## Network

<b>Ethernet</b>		RJ-45(10/100BASE-T)
<b>Video Compression</b>		H.265/H.264: Main/High, MJPEG
<b>Audio Compression</b>		G.711 u-law /G.726 selectable, G.726(ADPCM) 8kHz, G.711 8kHz, G.726: 16kbps, 24kbps, 32kbps, 40kbps
<b>Smart Codec</b>		Manual, WiseStream II
<b>Bitrate Control</b>		H.265/H.264: CBR or VBR, MJPEG: VBR
<b>Streaming</b>	Unicast	Up to 6 users
	Multicast	Support
	Multiple Streaming	Up to 3 profiles
<b>Protocol</b>		IPv4, IPv6, TCP/IP, UDP/IP, RTP(UDP), RTP(TCP), RTCP, RTSP, NTP, HTTP, HTTPS, SSL/TLS, DHCP, FTP, SMTP, ICMP, IGMP, SNMPv1/v2c/v3(MIB-2), ARP, DNS, DDNS, QoS, UPnP, Bonjour, LLDP, SRTP(TCP, UDP Unicast), PPPoE, PIM-SM

## Network

Application Programming Interface	ONVIF	S, G, T
	Others	SUNAPI(HTTP API)
Direct Cloud Connection		Optional (needs gateway)

## Security

OS / Firmware Protect	Encrypted firmware
User authentication	Digest authentication, Prevent brute-force attack
Network authentication	IEEE 802.1X(EAP-TLS, EAP-LEAP, EAP-PEAP, MSCHAPv2)
Secure Communication	HTTPS, WSS(WebSocket Secure), SRTP
Access Control	IP-based access control
Data Protect	Encryption credentials, Encrypt compress for live recording file export
Audit	Access / System / Event Log management
Device ID	Device certificate(Hanwha Vision Root CA)
Secure Storage	SDcard partition encrypt(AES-256)

## General

Memory	RAM	512MB
	Flash	256MB
Edge Storage	Micro SD/SDHC/SDXC	Max. 128GB x 1slot

## Environmental & Electrical

Operating Condition	Temperature	-40°C~+55°C(-40°F~+131°F)
	Humidity	0~95% RH(non-condensing)
	Others	Start up should be done at above -30°C
Storage Condition	Temperature	-40°C~+60°C(-40°F~+140°F)
	Humidity	0~95% RH(non-condensing)
Input Voltage		PoE(IEEE802.3af, Class3), 12VDC
Power Consumption	PoE	Max 11.4W, typical 8W
	12VDC	Max 9.6W, typical 7W

## Mechanical

Color	Dark grey
Material	Aluminum
Product Dimensions	ø78.0x259.8mm(3.07x10.23")
Product Weight	900g(1.98lb)
Compatible Conduit Hole	19.1mm(3/4")(M25)
Compatible Gang Box	Single, Double, 4" Octagon

### Certifications & Standards

EMC	FCC 47 CFR 15 Subpart B Class A, ICES-3(A)/NMB-3(A), CE/UKCA - EN55032 Class A, EN 50130-4, EN 61000-3-2, EN 61000-3-3, VCCI CISPR 32 Class A, RCM AS-NZS CISPR 32 Class A, KS C 9832 Class A, KS C 9835
Safety	UL 60950-1, CAN/CSA C22.2 NO. 60950-1, IEC 62471
Environment	IEC/EN 63000, IEC 60529 IP66, IEC 62262 IK10, NEMA 250 type 4X

### DORI (EN62676-4 standard)

Detect (25PPM/ 8PPF)	Wide	27m(89.86ft)
	Tele	129m(422.61ft)
Observe (63PPM/ 19PPF)	Wide	11m(35.95ft)
	Tele	52m(169.04ft)
Recognize (125PPM/ 38PPF)	Wide	6m(17.97ft)
	Tele	26m(84.52ft)
Identify (250PPM/ 76PPF)	Wide	3m(8.99ft)
	Tele	13m(42.26ft)

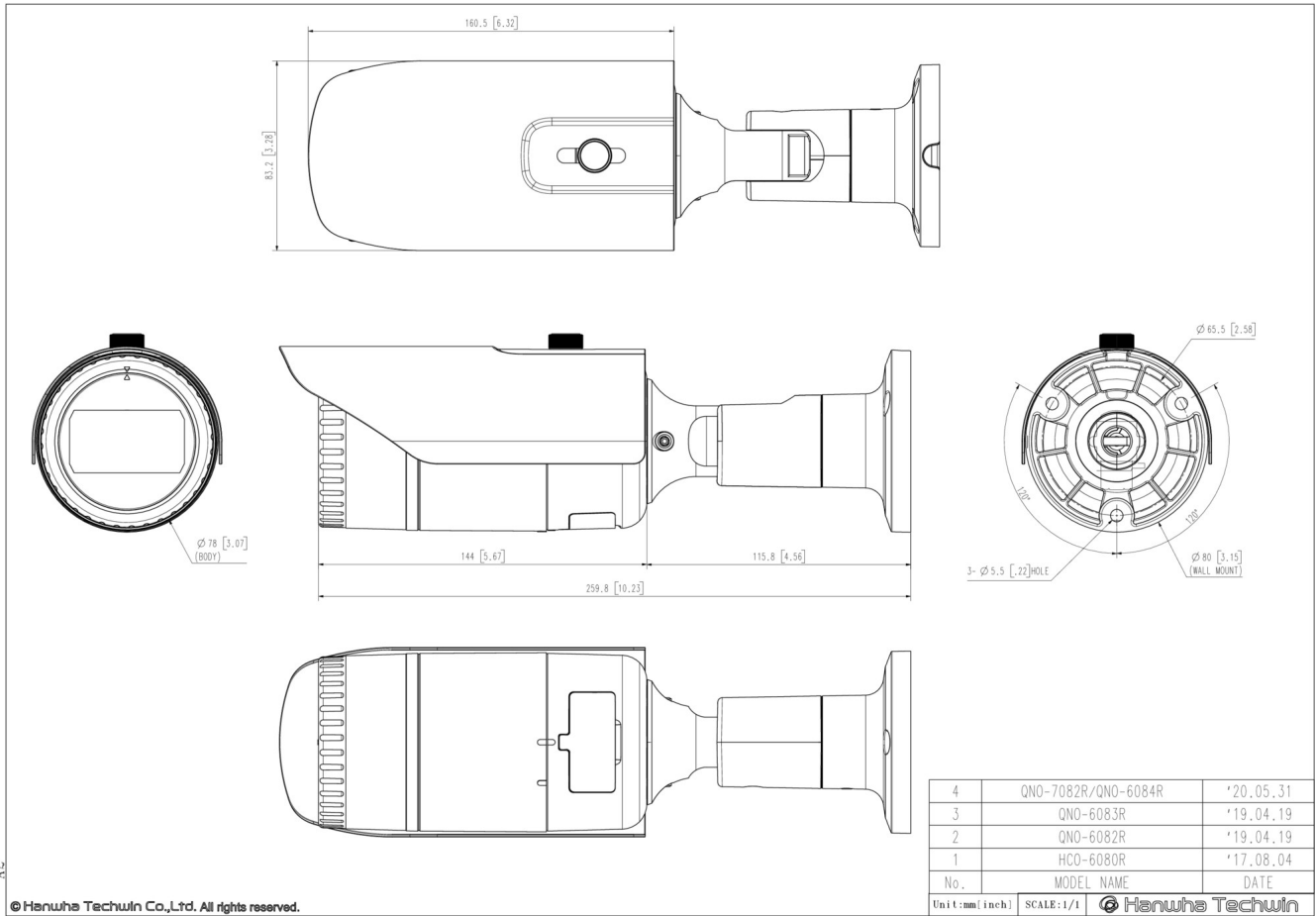
# QNO-7082R

4MP IR Bullet Camera



**CAD**

Unit: mm [inch]



A2

© Hanwha Techwin Co.,Ltd. All rights reserved.