



Network

PNM-A13022RV

13MP AI IR Panoramic Camera



Key Features

- Max.13MP panoramic stitching image
- Horizontal 194°, Vertical 93° field of view
- H.265/H.264/MJPEG Max. 30fps
- Analytics events based on AI engine:
 - Object detection (Person/Face/Vehicle/License plate),
 - IVA (Virtual line/Area, Enter/Exit, Loitering, Direction, Intrusion),
 - Slip&Fall detection, Face mask detection,
 - Social distancing detection, Motion detection
- Business intelligence based on AI engine:
 - People/Vehicle/Crowd counting, Queue management, Heatmap
- Support BestShot and full attributes
- WiseNR II (Based on AI engine), WiseStream (Based on AI engine)
- WiseIR: IR viewable length 20m(65.6ft)
- IP66, NEMA4X, IK10
- Device certificate(Hanwha Vision Root CA),
Secure storage (Secure element with FIPS 140-3 level3/CC EAL6+ certified)

Compatible Devices



SBP-250HMW



SBP-140CMB



SBP-180CMB



SBP-180CMS



SBP-150CMP



SBP-300CMP



SBP-900CMP



SBP-C15H



SBP-C15P



SBP-C15NP



SBP-C35H



SBP-150CMI



SBP-300CMI



SBP-300CMW1



SBP-900CMW



SBP-300CMTW



SBP-300CMTS



SBP-250MMW



SBP-400MMW



SBP-115PFA



SBP-150PMW



SBP-156KMW



SBP-156LMW1



SBP-150NBW



SBP-060BA



SBP-250C



SPB-MDC21W



SBP-300MMW



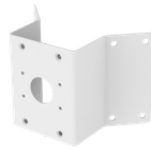
SBP-300MMW1



SBP-300BW1



SBP-300PMW2



SBP-300KMW1



SBP-300LMW



SBP-300NBW

PNM-A13022RV

13MP AI IR Panoramic Camera



Specifications

Video		
Imaging Device	Size	1/2.8"
	Type	CMOS
Resolution	5120x2592, 4112x2080, 3240x1640, 2940x1488, 2560x1296, 2016x1016, 1600x800, 1424x720, 1280x648, 1016x512, 832x480, 832x416, 800x600, 640x480	
Max. Framerate	H.265/H.264	30fps/25fps(60Hz/50Hz)
	MJPEG	30fps
Min. Illumination (Lux)	Color(1/30sec, 30IRE)	0.1
	BW(1/30sec, 30IRE)	0.01
Video Out	USB: USB Type C. Preview and installation ONLY. Requires WiFi dongle.	
Lens		
Focal Length (mm)	3.06	
Max Aperture Ratio (F number)	Wide	1.6
Angular Field of View	Horizontal	194°
	Vertical	93°
Min. Object Distance	5m(16.4ft)	
Focus Control	Fixed	
Pan / Tilt / Rotate		
Pan / Tilt / Rotate Range	Pan	0°~360°
	Tilt	0°~50°
Operational		
Day & Night	Auto(ICR)	
Backlight Compensation	BLC, HLC, WDR, SDR	
Wide Dynamic Range (dB)	120	
Digital Noise Reduction	WiseNR II (Based on AI engine), SSNR V	
Motion Detection	Quantity	8ea
	Shape	8point Polygonal zones

Operational

Privacy Masking	Quantity	4ea
	Shape	Polygonal zones
	Color / Option	Gray, Green, Red, Blue, Black, White
Gain Control		Low, Middle, High
White Balance		ATW, AWC, Manual, Indoor, Outdoor
Electronic Shutter	Mode	Minimum, Maximum, Anti flicker, Prefer shutter control(Based on AI engine)
	Speed Range	2~1/12,000sec
Video Rotation		Flip, Mirror
Alarm Interface	In/Out	2 configurable I/O ports
	Others	Support extra alarm I/O via optional I/O box
Alarm Triggers		Analytics, Network disconnect, Alarm input, Time schedule, MQTT subscription
Alarm Events When Alarm Trigger Occurred		File upload(image): e-mail/FTP/SFTP, File upload(video clip): FTP/SFTP, Recording: SD/SDHC/SDXC or NAS recording at event triggers.Alarm output, Handover: PTZ preset,send message by HTTP/HTTPS/TCP,Audio clip playback, MQTT: publication
Audio In		Selectable(mic in/line in)
Audio Out		Line out
Light Type		IR LED
Light Viewable Length	IR	20m(65.62ft) 4 individual zones with Automatic/Manual level adjustment
IR Wavelength		850nm

Analytics

Classified Object Type		Person, Face, Vehicle, License plate
Attributes	Person	Upper/Lower clothes color, Gender, Bag
	Vehicle	Type(car, bus, truck, motorcycle, bicycle), Color
	Face	Age, Gender, Face mask, Glasses
Thumbnail		BestShot
Analytics Events	Based on AI Engine	Object detection, Virtual line(Crossing/Direction), Virtual area(Loitering/Intrusion/Enter/Exit), Motion detection, Face mask detection, Social distancing detection, Slip & fall detection
	Normal	Defocus detection, Tampering, Audio detection, Virtual area(Appear/Disappear)
Business Intelligence	Based on AI Engine	People counting, Queue management, Heatmap, Vehicle counting, Crowd counting

Network

Ethernet		Metal shielded RJ-45(10/100/1000BASE-T)
Video Compression		H.265/H.264: Main/Baseline/High, MJPEG
Audio Compression		G.711 u-law /G.726 selectable,G.726(ADPCM) 8kHz,G.711 8kHz, G.726: 16kbps,24kbps,32kbps,40kbps, AAC-LC: 48kbps at 16kHz, OPUS: 48kHz(64kbps)

Network

Smart Codec		Manual, WiseStream(Based on AI engine)
Bitrate Control		H.265/H.264: CBR or VBR, MJPEG: VBR
Streaming	Unicast	Up to 20 users
	Multicast	Support
	Multiple Streaming	Up to 4 profiles, 3 virtual channel support
Protocol		IPv4, IPv6, TCP/IP, UDP/IP, RTP(UDP), RTP(TCP), RTCP, RTSP, NTP, HTTP, HTTPS, SSL/TLS, DHCP, FTP, SFTP, SMTP, ICMP, IGMP, SNMPv1/v2c/v3(MIB-2), ARP, DNS, DDNS, QoS, UPnP, Bonjour, LLDP, SRTP(TCP, UDP Unicast), MQTT
Application Programming Interface	ONVIF	S, G, T, M
	Others	SUNAPI(HTTP API), Hanwha Vision Open Platform
Direct Cloud Connection		Support

Security

OS / Firmware Protect	Encrypted firmware, Secure boot, Signed firmware
User authentication	Digest authentication, Prevent brute-force attack
Network authentication	IEEE 802.1X(EAP-TLS, EAP-LEAP, EAP-PEAP, MSCHAPv2)
Secure Communication	HTTPS, WSS(WebSocket Secure), SRTP, 802.1AE(MACsec)
Access Control	IP-based access control, MAC-based access control, Auto logout
Data Protect	Encryption credentials, Encrypt compress for live recording file export
Audit	Access / System / Event Log management
Device ID	Device certificate(Hanwha Vision Root CA)
Secure Storage	SDcard partition encrypt(AES-256), Secure element
Security Certificate	Secure element(FIPS 140-3 level3, CC EAL6+), Consumer IoT Security Standard (ETSI EN 303 645)

General

SoC	Type	NT98692
Memory	RAM	8GB
	Flash	8GB eMMC
Edge Storage	Micro SD/SDHC/SDXC	Max. 1TB x 2slot(Total 2TB)

Environmental & Electrical

Operating Condition	Temperature	-40°C~+55°C(-40°F~+131°F)
	Humidity	0~100% RH(condensing)
Storage Condition	Temperature	-50°C~+60°C(-58°F~+140°F)
	Humidity	0~90% RH(non-condensing)
EPA(Effective Projected Area)		0.0286 m ²
Input Voltage		PoE+(IEEE802.3at, Class4), 12VDC

Environmental & Electrical

Power Consumption	PoE	Max 22.3W, typical 11.5W
	12VDC	Max 20.0W, typical 10.0W
Power Redundance Failover		Support

Mechanical

Color	White
Material	Aluminum, Hard-coated dome
RAL Code	RAL9003
Product Dimensions	ø253x170mm(9.96x6.69")
Product Weight	2,800g(6.17lb)
Compatible Conduit Hole	19.1mm(3/4")(M25)
Compatible Gang Box	Single, Double, 4" Octagon, Square

Certifications & Standards

EMC	FCC 47 CFR 15 Subpart B Class A, ICES-3(A)/NMB-3(A), CE/UKCA - EN55032 Class A, EN 50130-4, EN 61000-3-2, EN 61000-3-3, VCCI CISPR 32 Class A, RCM AS-NZS CISPR 32 Class A, KS C 9832 Class A, KS C 9835
Safety	UL 62368-1, CAN/CSA C22.2 NO. 62368-1, IEC 62471
Environment	IEC/EN 63000, IEC 60529 IP66, IEC 62262 IK10, NEMA 250 type 4X, IEC 60068-2-1, IEC 60068-2-2, IEC 60068-2-6, IEC 60068-2-14, IEC 60068-2-27, IEC 60068-2-78

DORI (EN62676-4 standard)

Detect (25PPM/ 8PPF)	Wide	43.8m(143.85ft)
Observe (63PPM/ 19PPF)	Wide	17.5m(57.54ft)
Recognize (125PPM/ 38PPF)	Wide	8.8m(28.77ft)
Identify (250PPM/ 76PPF)	Wide	4.4m(14.39ft)

PNM-A13022RV

13MP AI IR Panoramic Camera



CAD

Unit: mm [inch]

