

4MP Starlight Network Security System

Four (4) 4MP Eyeball Network Cameras (Black Housing) with One (1) 4-channel 4K NVR



System Overview

The Dahua Network Security System provides all the components to quickly install, configure, and employ a complete video surveillance solution. The IP cameras offer the clarity of 4MP video, and the NVR offers built-in motion detection algorithms, alarm triggers, and customized recording modes. The NVR also features Plug and Play technology to connect quickly to cameras on the same network. Each component accepts a PoE power supply to facilitate installation.

Functions

Starlight Technology

For challenging low-light applications, Dahua's Starlight low light Technology offers best-in-class light sensitivity, capturing details in low light applications. The camera uses a set of optical features to balance light throughout the scene, resulting in clear images in dark environments.

Intelligent Video System

IVS is a built-in video analytic algorithm that delivers intelligent functions to monitor a scene for Tripwire violations and intrusion detection. A camera with IVS quickly and accurately responds to monitoring events in a specific area. Working with IVS-enabled IP cameras, the NVR recognizes and records video that contains IVS data on all IP channels.

Smart IR

With IR illumination, detailed images can be captured in low light or total darkness. The camera's Smart IR technology adjusts the intensity of camera's infrared LEDs to compensate the distance of an object. Smart IR technology prevents IR LEDs from whitening out images as they come closer to the camera. The camera's integrated infrared illumination provides high performance in extreme low-light environments up to 30 m (98 ft).

4MP Network Cameras

- 4MP (2560 x 1440) at 30 fps Maximum Resolution
- 2.8 mm Fixed Lens
- Maximum IR Length 30 m (98 ft) with Smart IR
- Starlight Technology for Ultra Low-light Applications
- Built-in Microphone
- Intelligent Video System
- IP67 Environmental Protection

4K Network Video Recorder

- 2 TB Pre-installed Hard Disk Drive
- Supports Remote Configuration and Management of IP Cameras
- Smart H.265+ and Smart H.264+ Dual Codec
- Up to 8 MP Resolution for Preview and Playback
- 80 Mbps Incoming Bandwidth

Flexible Recording

The NVR offers a variety of configurable recording options and schedules that saves disk space and active monitoring time. The NVR monitors incoming video and can be programmed to record if motion is detected or if an alarm is triggered. The NVR can also be programmed to record on a schedule or at different intervals. The recording options and schedules can be set for each individual camera or copied to all cameras.

High Efficiency Video Coding (H.265)

The H.265 (ITU-T VCEG) video compression standard offers double the data compression ratio at the same level of video quality, or substantially improved video quality at the same bit rate, as compared to older video compression technologies. H.265 offers such impressive compression by expanding the pattern comparison and difference-coding, improving motion vector prediction and motion region merging, and incorporating an additional filtering step called sample-adaptive offset filtering.

Environmental

With a temperature range of -40°C to $+60^{\circ}\text{C}$ (-40°F to $+140^{\circ}\text{F}$), the cameras are designed for extreme temperature environments. The cameras, subjected to rigorous dust and water immersion tests, are certified to the IP67 rating making them suitable for demanding outdoor applications.

The NVR features an operating temperature of -10°C to $+55^{\circ}\text{C}$ ($+14^{\circ}\text{F}$ to $+131^{\circ}\text{F}$).

Technical Specification**N42BJ62-B 4 MP Network Camera**

Camera

| | |
|--------------------------|--|
| Image Sensor | 1/3-in. CMOS |
| Effective Pixels | 2688 (H) x 1520 (V), 4 MP |
| ROM/RAM | 128 MB / 128 MB |
| Scanning System | Progressive |
| Electronic Shutter Speed | Auto, Manual: 1/30 s to 1/100000 s |
| Minimum Illumination | Color: 0.008 lux at F1.6 0 Lux with IR on |
| IR Distance | Up to 30.0 m (98.43 ft) |
| IR On/Off Control | Auto, Manual |
| IR LEDs | Two (2) |

Lens

| | |
|----------------------|---|
| Lens Type | Fixed-focal |
| Mount Type | M12 |
| Focal Length | 2.8 mm |
| Max Aperture | F1.6 |
| Angle of View | Horizontal: 102° Vertical: 55° Diagonal: 121° |
| Iris | Fixed Aperture |
| Close Focus Distance | 0.90 m (2.95 ft) |

DORI¹ Distance

| Detect (8 ppf) | Observe (19 ppf) | Recognize (38 ppf) | Identify (76 ppf) |
|--------------------|---------------------|-----------------------|----------------------|
| 56.0 m (183.73 ft) | 22.40 m (73.49 ft) | 11.20 m (36.75 ft) | 5.60 m (18.37 ft) |

Installation Angle

| | |
|-------|--|
| Range | Pan: 0° to 360° Tilt: 0° to 78° Rotation: 0° to 360° |
|-------|--|

Video

| | | |
|----------------------|---|--|
| Compression | Smart H.265+, H.265, Smart H.264+, H.264, H.264B MJPEG (sub stream only) | |
| Streaming Capability | Two (2) Streams | |
| Resolution | 4 MP (2688 x 1520), 2560 x 1440, 2304 x 1296, 1080p (1920 x 1080), 1.3 MP (1280 x 960), 720p (1280 x 720), D1 (704 x 480); VGA (640 x 480); CIF (352 x 240) | |
| Frame Rate | Main Stream | 2688 x 1520 at 20 fps or 2560 x 1440 at 30 fps |
| | Sub Stream | D1 (704 x 480) at 30 fps |
| Bit Rate Control | CBR, VBR | |
| Day/Night | Auto (ICR), Color, B/W | |
| BLC Mode | BLC, HLC, True WDR (120 dB) | |
| White Balance | Auto, Natural, Street Lamp, Outdoor, Manual, Regional Custom | |
| Gain Control | Auto, Gain Priority, Shutter Priority, Manual | |
| Noise Reduction | 3D DNR | |

1. The DORI distance is a measure of the general proximity for a specific classification to help pinpoint the right camera for your needs. The DORI distance is calculated based on sensor specifications and lab test results according to EN 62676-4, the standard that defines the criteria for the Detect, Observe, Recognize and Identify classifications.

| | |
|--------------------|--------------------------------|
| Motion Detection | Off, On (4 Zones, rectangular) |
| Region of Interest | Off, On (4 Zones) |
| Smart IR | Auto, Manual |
| Digital Zoom | 16x |
| Flip | 0°, 90°, 180°, 270° |
| Mirror | Off, On |
| Privacy Masking | Off, On (4 Areas, rectangular) |

Network

| | |
|-------------------------|---|
| Ethernet | RJ-45 (10/100 Base-T) |
| Protocol | HTTP, HTTPS, TCP, ARP, RTSP, RTP, UDP, SMTP, FTP, DHCP, DNS, DDNS, PPPOE, IPv4/v6, QoS, UPnP, NTP, Bonjour, 802.1x, Multicast, ICMP, IGMP, SNMP |
| Interoperability | ONVIF (Profile S, G, T), CGI, P2P, Milestone, Genetec |
| Auto Register | Support |
| Streaming Method | Unicast, Multicast |
| Maximum User Access | 20 Users /20 Hosts |
| Edge Storage | Network Attached Storage (NAS), FTP, SFTP, Micro SD Card slot (maximum 256 GB) |
| Web Viewer | IE, Chrome, Firefox |
| Management Software | Smart PSS, DSS, DMSS |
| Mobile Operating System | IOS, Android |

Audio

| | |
|-------------------|------------------------|
| Input | Built-in Microphone |
| Audio Compression | G.711A, G.711Mu, G.726 |

Certifications

| | |
|-------------------------------------|--|
| Safety | EN 60950-1 |
| Electromagnetic Compatibility (EMC) | CFR 47 FCC Part 15 Subpart B Electromagnetic Compatibility Directive 2014/30/EU |

Electrical

| | |
|-------------------|---------------------------------------|
| Power Supply | 12 VDC or PoE (IEEE 802.3af, Class 0) |
| Power Consumption | < 6.6 W |

Environmental

| | |
|----------------------|---|
| Operating Conditions | -40° C to +60° C (-40° F to +140° F), Less than 95% RH |
| Storage Conditions | -40° C to +60° C (-40° F to +140° F) |
| Ingress Protection | IP67 |

Construction

| | |
|--------------|--|
| Casing | Metal |
| Dimensions | ø121.90 mm x 99.10 mm (ø4.80 in. x 3.90 in.) |
| Net Weight | 0.48 kg (1.10 lb) |
| Gross Weight | 0.65 kg (1.40 lb) |

Intelligence

IVS triggers an alarm and takes a defined action for the following events:

| | |
|-------------------|---|
| Standard Features | <ul style="list-style-type: none"> Tampering with the camera. Error writing to an onboard Micro SD card. Error sending or receiving data over the network. Unauthorized access to the camera. |
| Premium Features | |
| Tripwire | A target crosses a user-defined line. |
| Intrusion | A target enters or exits a defined perimeter. |

Technical Specification**N41C1P2 4K NVR**

System

| | |
|------------------|-------------------------------------|
| Main Processor | Industrial-grade Embedded Processor |
| Operating System | Embedded Linux |

Audio and Video

| | |
|-----------------|---|
| IP Camera Input | Four (4) Channels |
| Audio | Input: One (1) Channel, RCA Output: One (1) Channel, RCA |

Display

| | |
|--------------------------|--|
| Interface | One (1) HDMI One (1) VGA |
| Native Output Resolution | 3840 x 2160, 1920 x 1080, 1280 x 1024, 1280 x 720 |
| Maximum Decoding | Two (2) Channel of 8 MP at 30 fps Four (4) Channels of 4 MP at 30 fps |
| Multi-screen Display | 1/4 |
| On-screen Display | Camera Title, Time, Video Loss, Camera Lock, Motion Detection, Recording |

Recording

| | |
|--------------------------------|--|
| Video Compression | Smart H.265+, H.265, Smart H.264+, H.264, MJPEG |
| Audio Compression | PCM, G.711A, G.711Mu, G.726 |
| Supported IP Camera Resolution | 8 MP, 6 MP, 5 MP, 4 MP, 3 MP, 1080p, 720p, D1 |
| Maximum Recording Bandwidth | 80 Mbps |
| Record Mode | Manual Recording; Alarm Recording; SMD Recording; Smart Recording |

Video Detection and Alarm

| | |
|-------------------|--|
| General Alarms | Motion detection, privacy masking, video loss, scene changing, PIR alarm, IPC external alarm |
| Anomaly Alarms | Camera disconnection, storage error, disk full, IP conflict, MAC conflict, login locked, and cybersecurity exception |
| Analytics+ Alarms | Face detection, perimeter protection (intrusion and tripwire), IVS, people counting, heat map, and SMD alarms |
| Alarm Actions | Recording, snapshot, audio, buzzer, log, preset, and email |

Playback and Backup

| | |
|-------------------|--|
| Sync Playback | 1/4 |
| Search Mode | Time/Date, Alarm, MD and Exact Search (accurate to one second), Smart Search |
| Playback Function | Play, Pause, Stop, Rewind, Fast Play, Slow Play, Reverse, By Frame, Full Screen, Backup Selection (video clip or file), Partial Zoom, Audio On/Off |
| Backup Mode | USB Device, Network |

Third-party Support

| | |
|---------------------|---|
| Third-party Support | Dahua, Arecont Vision, AXIS, Bosch, Brickcom, Canon, CP Plus, Dynacolor, Honeywell, Panasonic, Pelco, Samsung, Sanyo, Sony, Videotec, Vivotek, and others |
|---------------------|---|

Network

| | |
|-------------------------|--|
| Ethernet | One (1) RJ-45 Port (10/100 Mbps), Self-adaptive |
| PoE | Four (4) Ports (IEEE802.3af/at) |
| Network Function | HTTP; HTTPS; TCP/IP; IPv4/IPv6; UPnP; SNMP; RTSP; UDP; SMTP; NTP; DHCP; DNS; IP Filter; DDNS; FTP; Alarm Server; IP Search (Support Dahua IP camera; DVR; NVS); P2P; Auto register |
| Maximum User Access | 128 |
| Mobile Operating System | IOS, Android |
| Browser | Chrome, IE 9 or later |
| Interoperability | ONVIF Profiles S,T,G; CGI, SDK |

Storage

| | |
|--------------|---|
| Internal HDD | One (1) SATA III Port, Up to 10 TB capacity per HDD (Ships with a pre-installed 2 TB HDD) |
| HDD Mode | Single |

Auxiliary Interface

| | |
|-----|------------------------------------|
| USB | Two (2) USB 2.0 Ports (rear panel) |
|-----|------------------------------------|

Electrical

| | |
|-----------------------|--------------------------------|
| Power Supply | 48 VDC, 1.25 A |
| NVR Power Consumption | < 10 W, without HDD |
| Total PoE Budget | 25.5 W single port, 36 W total |

Environmental

| | |
|----------------------|---|
| Operating Conditions | -10° C to +50° C (+14° F to +122° F), 10% to 93% RH |
| Storage Conditions | 0° C to +40° C (32° F to 104° F), 30% to 85% RH |

Construction

| | |
|------------------------|--|
| Dimensions (W x L x H) | 204.60 mm x 206.40 mm x 45.60 mm (8.06 in. x 8.12 in. x 1.80 in.) |
| Net Weight | 0.50 kg (1.10 lb), without HDD |
| Gross Weight | 1.43 kg (3.15 lb), without HDD |

Certifications

| | |
|-------------------------------------|---|
| Safety | EN62368-1 UL 62368-1 CAN/CSA C22.2 No.62368-1-14 |
| Electromagnetic Compatibility (EMC) | CFR 47 FCC Part 15 Subpart B EN55032, EN55024, EN55035, EN61000-3-2, EN61000-3-3, EN50130-4 |

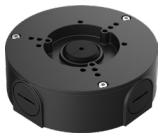
Ordering Information

| Type | Part Number | Description |
|------------------------------|---------------|--|
| 4 MP Network Security System | NB444E42B | |
| | • N42BJ62-B | 4MP IR Eyeball Network Cameras, Black Housing (x4) |
| | • N41C1P2 | 4-channel 4K NVR, 2 TB (x1) |
| Camera Accessories, optional | DH-PFA130-E-B | Junction Box, black (For use alone) |
| | DH-PFA151-B | Corner Mount, black (For use with DH-PFB203W-B wall mount) |
| | DH-PFA152-E-B | Pole Mount, black (For use with DH-PFB203W-B wall mount) |
| | DH-PFB203W-B | Wall Mount, black (For use alone or with DH-PFA152-E-B) |
| | DH-PFM321D-US | 12 VDC, 1 A Power Adapter |

Package Contents (individual devices ship with the following:)

| Product | Material |
|-----------------|--|
| Network Cameras | Printed Manual Printed Regulatory Guide Plastic Wall Anchors with Screws (x3) Mounting Template Waterproof Ethernet Connector |
| Storage Device | Quick Network Guide Printed Manual Printed Regulatory Guide Mouse Power Adapter with Power Cord Ethernet Cable, RJ-45 Rubber Feet (x4) |

Camera Accessories (Optional)



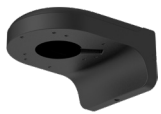
DH-PFA130-E-B
Waterproof
Junction Box



DH-PFA151-B
Corner Mount



DH-PFA152-E-B
Pole Mount



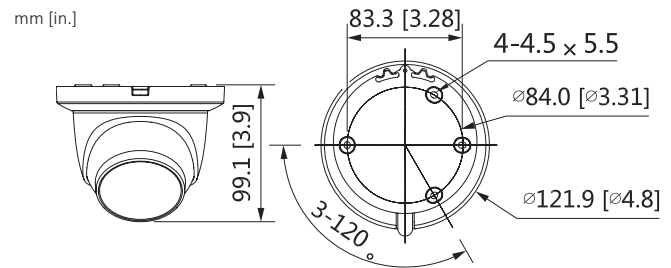
DH-PFB203W-B
Wall Mount



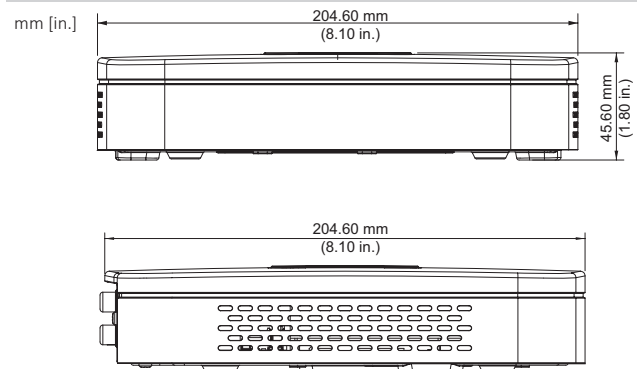
DH-PFM321D-US
Power Adapter

| Junction Mount | Wall Mount | Pole Mount |
|----------------|--------------|----------------------------|
| DH-PFA130-E-B | DH-PFB203W-B | DH-PFA152-E-B+DH-PFB203W-B |
| | | |

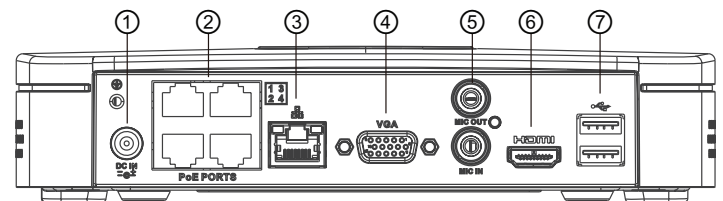
Dimensions - 4 MP Network Camera



Dimensions - 4K NVR



Rear Panel - 4K NVR



| | | | |
|---|-----------------------|---|---------------------------|
| 1 | Power Input | 5 | Audio Output MIC Input |
| 2 | PoE Ports, RJ-45 (x4) | 6 | HDMI Output |
| 3 | Network Port, RJ-45 | 7 | USB 2.0 Ports (x2) |
| 4 | VGA Output | | |