

MNT-NEMA-POLE

Nema Pole Mount Kit

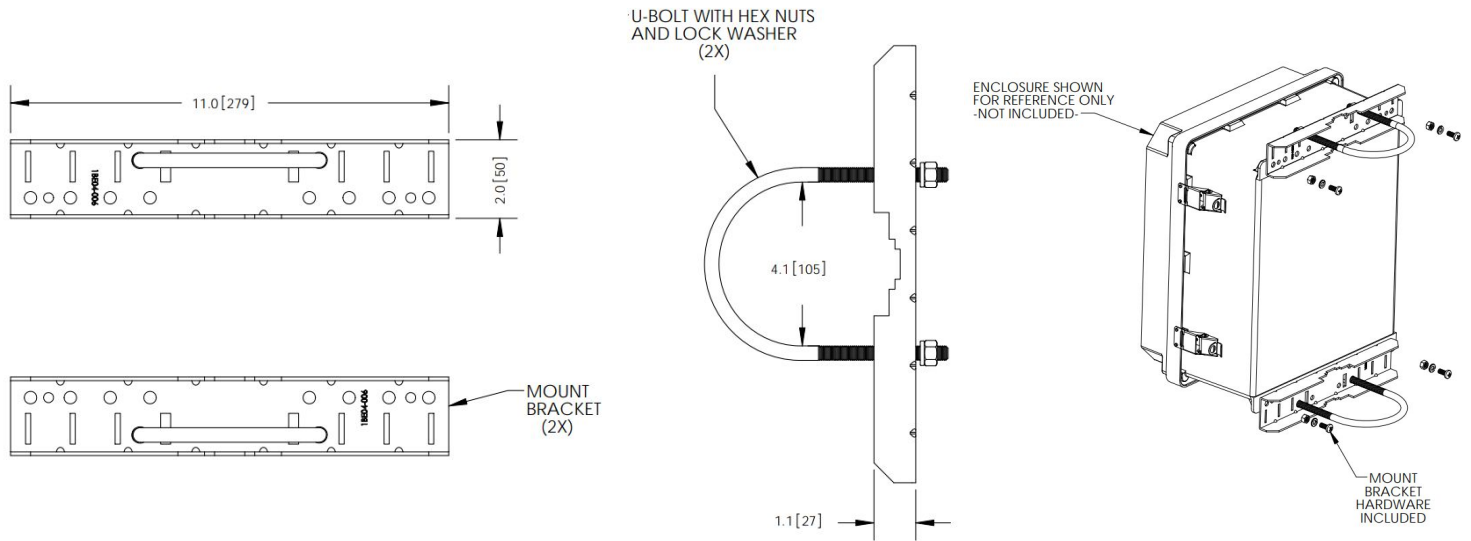


- Tough, durable design
- Stainless steel rails
- Fits pole diameters of 3-4 inches
- Fits NEMA BOX LG and NEMA BOX LG-HEATER enclosures
- Includes 2x Mounting Rails and 2x U-Bolts and hardware

Technical Specification

Model	MNT-NEMA-POLE
Physical Properties	
Rail Material	Stainless Steel
Rail Dimension(W xH xD)	11" x 2" (279mm x 50mm)
Pole Compatibility	3" (76.2mm) to 4" (101.6mm) Dia. Poles
Color	NA
Applicable Models	NEMA BOX LG and NEMA BOX LG-HEATER

Dimensions (mm/in)



Application

