

# V-series Multi-Directional Panoramic AI Camera

MA9311-EHTV / MA9322-EHTV-V2



VIVOTEK's V-series Multi-Directional Panoramic AI Cameras combine dual-lens and quad-lens options in one device, reducing installation time, accessories, and costs. With the largest sensor size and P-iris technology, they deliver superior image quality and seamless coverage, helping you work smarter and save more.

## Features

● Hardware ● Software

**5MP x 2CH / 5MP x 4CH**

Multi-Directional Panoramic AI Camera



**1/2.8" Progressive CMOS**

Exceptional performance in low-light conditions

**Wide angle of view**

Horizontal 96° / Vertical 69°

**120 dB WDR Pro**



**Weatherproof and Impact Protection**

IK10 / IP66

**Up to 30 Meters IR Illuminators**



**Hard-coated bubble**

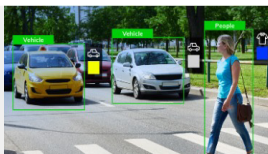
Prevent scratches on the surface

**TPM 2.0 Encryption Chip**

Protects sensitive data and credentials

**Vision Object Analytic**

Identify people, vehicles and attributes



**Deep Search**

Available with supported platform



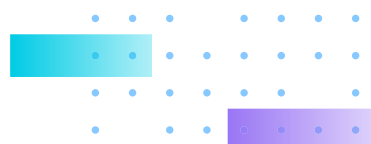
**Smart VCA**

Accurate detect incidents



**Trend-Micro™ IoT Security**

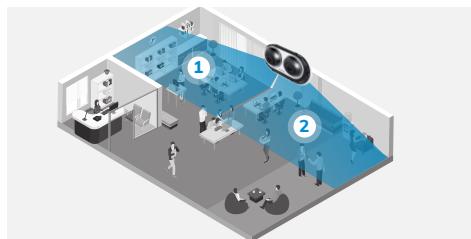
Defend and quarantine vulnerability protection



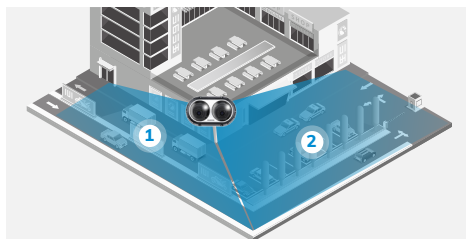
## Simplify Multi-Angle Coverage with One Device

The Multi-Directional Panoramic AI Camera delivers comprehensive coverage with its wide field of view, eliminating blind spots and reducing the need for multiple cameras. Available in dual-lens and quad-lens, each lens can be independently adjusted to focus on different areas, providing customizable perspectives tailored to your surveillance needs.

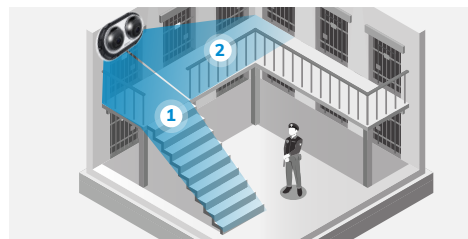
### Dual-Lens efficiency: perfect for two-way monitoring



Hallway

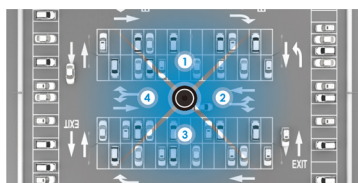


Corners

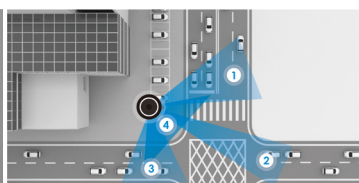


stairs

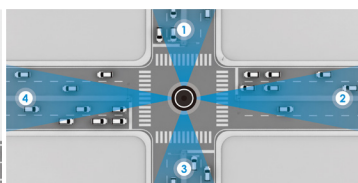
### Quad-Lens power: complete 270 / 360° coverage



Parking



Corners



Traffic



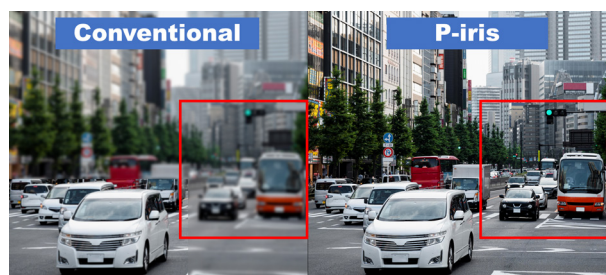
Interiors

## Superior Clarity in Any Environment



### Exceptional clarity in any lighting condition

The V-series Multi-Directional Panoramic AI Camera features with 1/2.8" Progressive CMOS sensor, 30m IR distance, and WDR technology, ensuring sharp, clear visuals with minimal noise in low-light and high-contrast conditions—perfect for 24/7 panoramic surveillance.



### Sharper vision with P-Iris

The V-series Multi-Directional Panoramic AI Camera features advanced P-Iris technology, ensuring precise aperture control for sharper images, enhanced clarity, and improved depth of field. This ensures consistent, high-quality performance in varying lighting conditions, making it ideal for detailed and reliable surveillance across expansive areas.

### AI detection for accurate alarm

VIVOTEK Smart VCA offers precise object and attribute tracking, providing detailed video analytics for targeted monitoring and quick searches.

#### Built-in Analytics



Smart Motion



Line Crossing



Intrusion



Loitering



Face



Crowd



Missing Object



Unattended Object

#### Paid Analytics



Running



Parking Detection



Restricted Zone



## Easy Installation, Effortless Maintenance

### Simple Installation

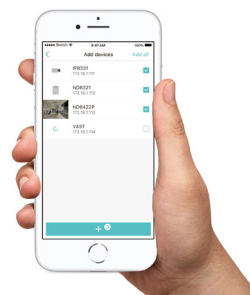
The V-series Multi-Directional Panoramic AI Camera offers easy installation with a click-in mount, interchangeable I/O cable, and quick Wi-Fi setup, ensuring seamless integration into your surveillance system.



Easier mount with click-in design



Interchangeable I/O Cable



Quick adjustment with Wi-Fi

### Easy maintenance

The V-series Multi-Directional Panoramic AI Camera features a hard-coated bubble that prevents scratches on the surface, along with a rain/snow protection sunshield that reduces the need for frequent maintenance.



Hard-coated bubble



Rain/Snow protection sunshield

## Complete Video Security with VIVOTEK Solution

Access and manage all devices and accounts through a single platform, providing accurate event monitoring and intuitive security system operation video investigation no matter where you are.

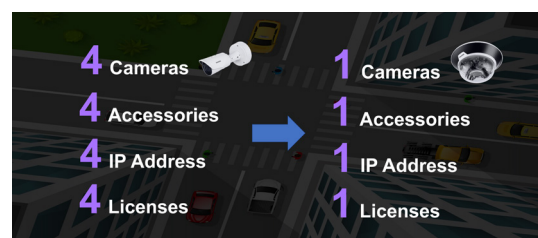
VSS Pro

NVR CORE+ AI

VORTEX BY VIVOTEK

### One camera, one IP, one installation, one license

A single installation provides complete coverage while reducing deployment complexity. Additionally, with a reduced number of cameras, licenses and maintenance cost will be cut down as well.



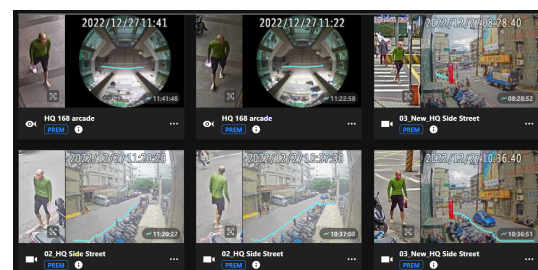
### Instant notification to aware incident

Integrated with VORTEX, key individuals can be promptly notified through mobile push on VORTEX app or email, enabling proactive deterrent measures and the prevention of violations.

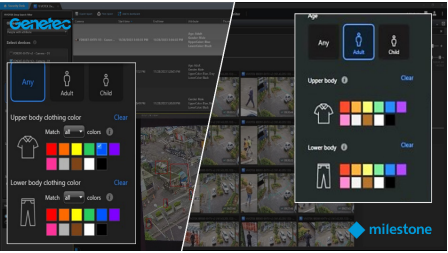


### Best way to search for footage – Deep Search

Effortlessly find evidence without the need to access numerous video footages by using Deep Search, which enables efficient searching for video clips based on various attributes. View snapshots of people and their paths, eliminating the need for video replays.

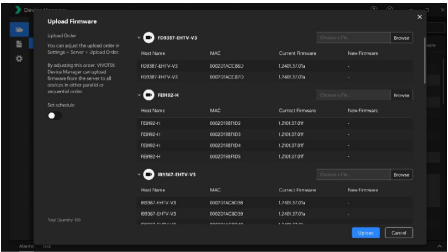


# Unified experience on Milestone and Genetec



## Deep Search Plugin for Milestone and Genetec

Easily enhance your Milestone XProtect or Genetec Security Center with VIVOTEK's AI cameras for instant evidence search by attributes. Since one Multi-Directional Panoramic AI Camera can replace multiple traditional cameras, you can reduce Milestone licenses from several to one, significantly lowering your total system costs.



## VIVOTEK Device Manager – Batch Configuration

Device Manager quickly configure your cameras and NVRs. With our batch configuration, IP allocation, HTTPS/IEEE certificates, and firmware updates have never been easier, ensuring the system is always up-to-date and streamlined.

# Ordering Information

Model	MA9311-EHTV	MA9322-EHTV-V2
		
Resolution	5 MP x 2	5 MP x 4
HFOV	96° ~ 30°	94° ~ 43°
P-iris Optical Lens	V	X
Focal Length	2.8~12 mm	3.2~7.7 mm
IR Distance	20m	30m
Hard-coated Bubble	V	V
Sunshield	V	X
Housing	IP66/67, IK10	IK10, IP66, NEMA4X

# Accessory

MA9311-EHTV



AO-015  
I/O Cable

MA9322-EHTV-V2



AM-529  
Mounting Adapter

AO-006  
I/O Cable