



TLMC-PLASTIC BOX



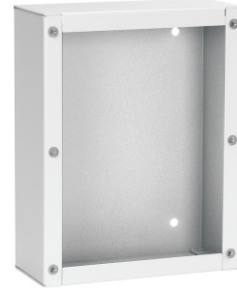
Plastic Back Box of AOP-SP and TLMC for flush mounting
Dim: 8"H x 6.25"W x 2.75"D

TLM-W BACKBOX



Plastic Back Box for TLM-W
Dim: 6.9"H x 5"W x 1.65"D

AOPSP BACKBOX



18 Ga Aluminum Back Box for AOP-SP and TLMC-W
Dim: 8.12"H x 6.17"W x 4"D

ERD-8



Ceiling mount backbox for TLI-CF
Dim: 12.25" Dia. x 4"D

BR-4WS



Ceiling Flush Speaker Grill Baffle for TLM-CF with 4" speaker
Dim: 7.65" Dia.

BR-8WS



Ceiling Flush Speaker Grill Baffle for TLI-CF with 8" speaker
Dim: 12.87" Dia.

MR-4



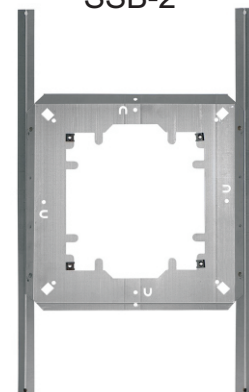
Mounting Ring for TLM-CS
Dim: 7.38" Dia. x 3"D

MR-8



Mounting Ring for TLI-CS
Dim: 12.38" Dia. x 3"D

SSB-2



Support Bridge for TLI to prevent ceiling tile sag
Dim: 23.75"H x 14.5"W

VRSC



Square Surface Mount
Vandal Resistant Baffle
Dim: 11"H x 13"W x 4"D

HHM-1020



Low Impedance Handheld Microphone
600Ω

HP-15-135-B



Stereo Headphone
8Ω, 100mW, with 1/4" plug
Volume control on each ear

PTA-1



Portable Test Amplifier
for use with DG-25III
Dim: 3 1/8" W x 4 1/4" H x 1 1/2" D
Weight: 5 oz

SG-1



Portable Sound Generator
for use with DG-25III
Dim: 2 1/8" W x 3 1/2" H x 1 3/4" D
Weight: 4 oz

POWER SUPPLIES

AD-1



Power Supply
Input: 100~240 VAC 50/60 Hz 0.3A
Output: +12 VDC, 500mA

AD-3



Power Supply
Input: 100~240 VAC 50/60 Hz 1.2A
Output: +24 VDC, 1.5A

AD-1U



Universal Power Supply
Input: 100~240 VAC 50/60 Hz 0.3A
Output: +12 VDC, 500mA

AD-3U



Universal Power Supply
100~240 VAC 50/60 Hz 0.8A
+24 VDC, 1A

AD-6PS



DG-12II and DG-25III Power Supply
Input: 100~240 VAC 50/60 Hz 4.5A
Output: +15 VDC, 12.3A