

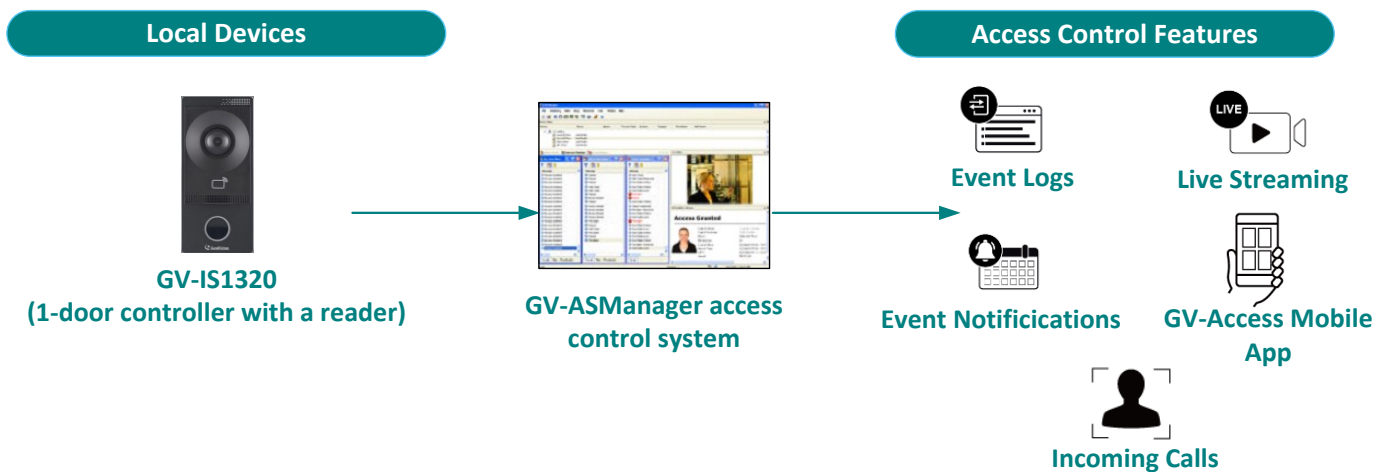
# GV-IS1320 H.265 2MP WDR IP Video Intercom



## Introduction

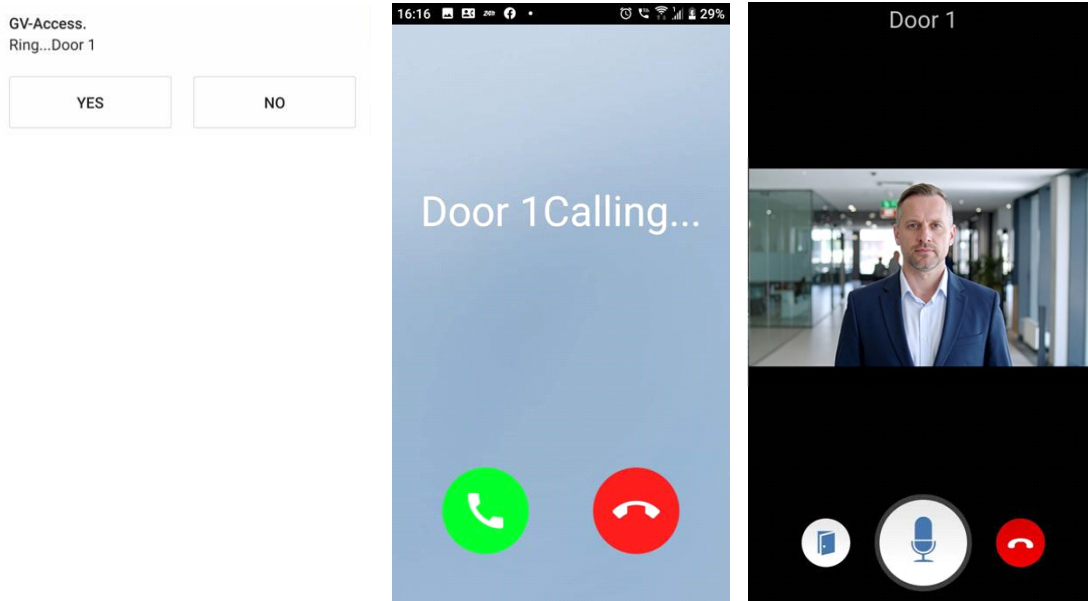
The GV-IS1320 Intercom Controller combines advanced access control with real-time video communication. Featuring a built-in 2 MP camera and 13.56 MHz reader, it integrates effortlessly with the GV-ASManager system to manage up to 100,000 access cards — ideal for enterprises, campuses, and multi-site facilities.

During access events, the GV-IS1320 delivers live video streaming and snapshots, giving operators instant visibility at every entry or exit point. And with a simple press of the call button, visitors connect directly to the GV-ASManager operator, who can see, speak, and grant access — all from one intuitive interface.



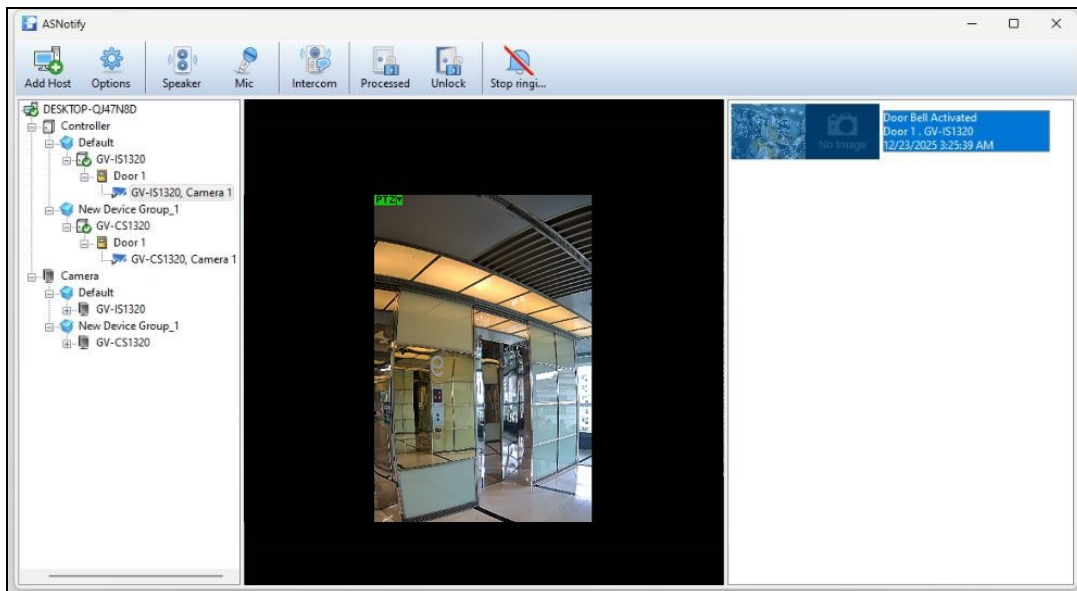
### Incoming calls on GV-Access Mobile App

When the call button on GV-IS1320 is pressed, the GV-Access mobile app displays an incoming call screen. Once the call is accepted, the live view is displayed.



### Incoming calls on GV-ASManager (via GV-ASNotify)

When the call button is pressed on the GV-IS1320, real-time snapshots and event alerts will appear in the GV-ASNotify window. Via GV-ASNotify, operators can communicate with guests through two-way audio and remotely unlock the door.



### Key Features

#### Controller

- One door IP controller (entry and exit)
- Built-in 13.56 MHz, ISO 14443A reader
- 4 inputs (Door Sensor, Door Button, Fire Sensor, Tamper Sensor)
- 2 outputs (Door Lock, Alarm)
- 2 GeoVision RS-485 or OSDP compliant readers supported

### GV-ASManager Access Control

- Call button to activate two-way communication between the operator and visitors
- Snapshots captured upon card presented or call button activated
- Up to 100,000 cards
- Door alarms: Held Open, Force Open, Tamper, and Fire Alarm
- Emergency lockdown
- Event alert approaches: e-mail and mobile app
- Log search
- Video integration for snapshots and live stream
- E-Map to visualize and display device locations during events

### Camera

- 1/2.9" progressive scan CMOS
- Minimum illumination at 0.02 lux
- Dual streams from MJPEG, H.264 and H.265
- Up to 30 fps at 1920 x 1080
- Intelligent IR
- Wide Dynamic Range (WDR)
- IR distance up to 3 m (10 ft)
- Day and night function (with removable IR-cut filter)
- Ingress protection (IP65)
- DC 12V / PoE (IEEE 802.3af)
- Built-in microphone and speaker
- Built-in microSD card slot (SD / SDHC / SDXC / UHS-I, Class 10) for local storage
- 2D/3D noise reduction
- Text overlay
- Privacy mask

### Specifications

| Camera               |   |       |
|----------------------|---|-------|
| Image Sensor         | 1/2.9" progressive scan CMOS            |       |
| Picture Elements     | 1920 (H) x 1080 (V)                     |       |
| Shutter Speed        | Automatic, Manual (1/25 ~ 1/100000 sec) |       |
| White Balance        | Automatic, Manual                       |       |
| Gain Control         | Automatic, Manual                       |       |
| Lens                 |   |       |
| Megapixel            | 2 MP                                    |       |
| Day / Night function | Yes (with removable IR-cut filter)      |       |
| Lens Type            | Fixed                                   |       |
| Focal Length         | 2.58 mm                                 |       |
| Maximum Aperture     | F/2.0                                   |       |
| Mount                | M12                                     |       |
| Horizontal FOV       | 124.3°                                  |       |
| Operation            | Focus                                   | Fixed |
|                      | Zoom                                    | Fixed |
|                      | Iris                                    | Fixed |
| IR LED Quantity      | 2 IR LEDs                               |       |
| Max. IR Distance     | 3 m (10 ft)                             |       |
| Operation            |   |       |
| Video Compression    | H.265, H.264                            |       |

|                           |   |  |     |  |
|---------------------------|---|--|-----|--|
| Video Streaming           |   | Dual streams from MJPEG, H.264 and H.265   |     |  |
| Video Resolution          | Stream 1  | 1920 x 1080 (16:9)   |     |  |
|                           | Stream 2  | 1280 x 720 (16:9)  |     |  |
| Frame Rate                |   | 30 fps at 1920 x 1080<br>25 fps at 1920 x 1080, 1280 x 720<br><br>* The frame rate and the performance may vary depending on the number of connections and data bitrates (different scenes).                       |     |  |
| Image Setting             |   | Brightness, Contrast, Saturation, Sharpness, Flicker-less, 3D Noise Reduction, Image Orientation (Flip, Mirror, 0°, 90°, 180°-including Corridor format)   |     |  |
| Audio Compression         |   | PCM, G711, MP3   |     |  |
| Audio Support             |   | Two-way audio  |     |  |
| <b>Network</b>            |   |  |     |  |
| Interface                 |   | 10/100 Ethernet  |     |  |
| Protocol                  |   | 802.1x, ARP, DDNS, DHCP, DNS, FTP, HTTP, HTTPS, IPv4, NTP, PPPoE, RTCP, RTP, RTSP, TCP, UDP  |     |  |
| <b>Mechanical</b>         |   |  |     |  |
| Connector                 | Power   | 2-pin terminal block, PoE  |     |  |
|                           | Ethernet  | RJ-45  |     |  |
|                           | Audio   | Built-in microphone and speaker  |     |  |
|                           | RS-485  | RS-485 interface   |     |  |
|                           |   | *For the RS-485 interface, connect only one of the following reader types to GV-IS1320: either GeoVision RS-485 readers or OSDP-compliant readers.<br>* Separate power source is required to power RS-485 readers. |     |  |
|                           | Digital I/O   | Terminal block, 4 inputs and 2 outputs   |     |  |
|                           | Audio   | Built-in microphone  | Yes |  |
|                           |   | Built-in speaker   | Yes |  |
| Local Storage             | Micro SD card slot (SD / SDHC / SDXC / UHS-I, Class 10)<br>* UHS-II card type is not supported. |  |     |  |
| <b>General</b>            |   |  |     |  |
| Operating Temperature     |   | -30°C ~ 60°C (-22°F ~ 140°F)   |     |  |
| Humidity                  |   | 10 ~ 90% (no condensation)   |     |  |
| Power Source              |   | 12 V DC ±25%, 1 A / PoE (IEEE 802.3af)   |     |  |
| Maximum Power Consumption |   | 10 W   |     |  |
| Dimensions                |   | 79 x 171 x 34 mm (3.1 x 6.7 x 1.3")  |     |  |
| Weight                    |   | 0.267 kg (0.59 lb)   |     |  |
| Ingress Protection        |   | IP65   |     |  |
| Certification             |   | CE, FCC, LVD, RoHS, UL compliant   |     |  |
| <b>Web Interface</b>      |   |  |     |  |
| Installation Management   |   | Web-based configuration  |     |  |
| Maintenance               |   | Firmware upgrade through Web Browser or Utility  |     |  |
| Access from Web Browser   |   | Camera Live View, Bandwidth Status, Image Snapshot, Two-way Audio, Text Overlay, Image Masking, Image Parameters   |     |  |
| Language                  |   | English  |     |  |
| <b>Applications</b>       |   |  |     |  |
| Live Viewing              |   | Web interface via browser (IE, Edge, Chrome, Firefox)  |     |  |
| Access Control Management |   | GV-ASManager   |     |  |

|                        |  |
|------------------------|--|
| Mobile App             | GV-Access mobile app   |
| <b>Controller</b>      |  |
| Number of User Cards   | 100,000 cards  |
| Frequency              | 13.56 MHz ISO14443A  |
| Event Buffer           | 65,535 events and log data   |
| RS-485 Interface       | 1 RS-485 interface for max. 2 RS-485 / OSDP readers                                  |
| Communication Protocol | TCP/IP   |
| Digital I/O            | 4 inputs (Door Sensor, Door Button, Fire Sensor, Tamper Sensor)<br>dry contact NO/NC |
|                        | 2 relay outputs (Door Lock, Alarm)<br>30V DC, 2A                                     |
| Supported ID Formats   | Built-in UID reader  |

**Note:**

1. The GV-IS1320 controller only supports GeoVision RS-485 readers or OSDP-compliant readers. It does not support network readers.
2. All specifications are subject to change without notice.

### Packing List

- GV-IS1320
- Function Cable
- Screw Kit
- Screw Driver
- MicroSD Card (32 GB, formatted and inserted)
- Drill Template Paster
- Wall Mount Bracket
- Embedded Bracket
- Download Guide

### Options

Optional accessories can expand the capabilities and versatilities of your controller. Consult your sales representative for more information.

|                                   |   |
|-----------------------------------|---|
| GV-AS ID Card, Key Fob, Sticker   | 13.56 MHz cards, key fobs and stickers are available.   |
| GV-IB25 / 65 / 85 Infrared Button | GV-IB25 / 65 / 85 Infrared Button detects infrared movement within 3 to 12 cm and allows you to open the door with a wave of hand.  |
| Electric Lock                     | Three types of electric locks are available: electromagnetic lock, electric bolt and electric strike.   |
| Push Button Switch                | The push button switch can be integrated with access control system, allowing door exit by momentarily activating or deactivating the electric locking device. Both American standard and European standard push buttons are available.   |
| Power Adapter                     | Contact our sales representatives for the countries and areas supported.  |
| GV-Mount929                       |  <p>Sunshield Wall Mount</p> <p>With GV-Mount929, the intercom controller can be conveniently installed at outdoor locations exposed to sunlight.<br/>           Dimensions: 178.5 × 83 × 50 mm (7.0" × 3.3" × 2.0")<br/>           Weight: 0.21 kg (0.46 lb)</p> |

### Dimensions

