

GV-GBL4911 Cloud AI 4MP H.265 4.3x Zoom Super Low Lux WDR Pro

IR Bullet IP Camera



- Direct-to-Cloud
- AI deep learning: AI Perimeter Protection & Classification (Human, Vehicle)
- 1/3" progressive scan CMOS
- Min. illumination at 0.005 lux
- Triple streams from H.265, H.264 and MJPEG
- Up to 30 fps at 2592 x 1520
- Intelligent IR
- IR distance up to 70 m (230 ft)
- Day and Night function (with removable IR-cut filter)
- Ingress protection (IP67)
- Vandal resistance (IK10 for metal casing)
- DC 12V / PoE (IEEE 802.3af)
- Built-in micro SD card slot (SDHC / SDXC / UHS-I, Class 10) for local storage
- Two-way audio capable
- Built in microphone
- Wide Dynamic Range Pro (WDR Pro)
- Defog
- GV-Center V2 connection
- AI analytics (Line Crossing, Region Entrance, Region Exiting, Region Intrusion, Target Counting, Heat Map Loitering Detection, Illegal Parking Detection, Face Detection, Video Metadata)
- Motion detection
- Text overlay
- Privacy mask
- 19 languages supported
- ONVIF (Profile G, S, T, M) conformant

Introduction

GV-GBL4911 is an outdoor bullet IP camera equipped with automatic IR-cut filter and IR LEDs for day and night surveillance. The camera supports H.265 video codec to achieve better compression ratio while maintaining high quality pictures at reduced network bandwidth. GV-GBL4911 adheres to IP67 and IK10 standards, and can be powered through PoE.

Empowered by deep learning algorithms, AI technology distinguishes human and vehicles from other moving objects. When integrated with GeoVision Video Management Software (VMS), it supports AI perimeter protection, real time alert, events playback and more. By connecting the camera to the cloud-based data center and video surveillance solution, GV-Cloud VMS, thousands of on-site videos, alarm devices, and AI events can be monitored and managed from a single platform.

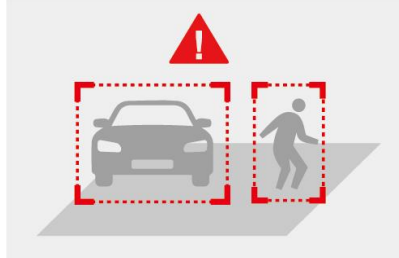
Deep Learning Function

Face Detection

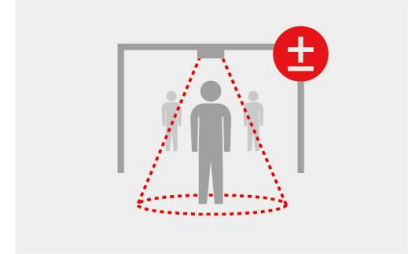


AI Perimeter Protection

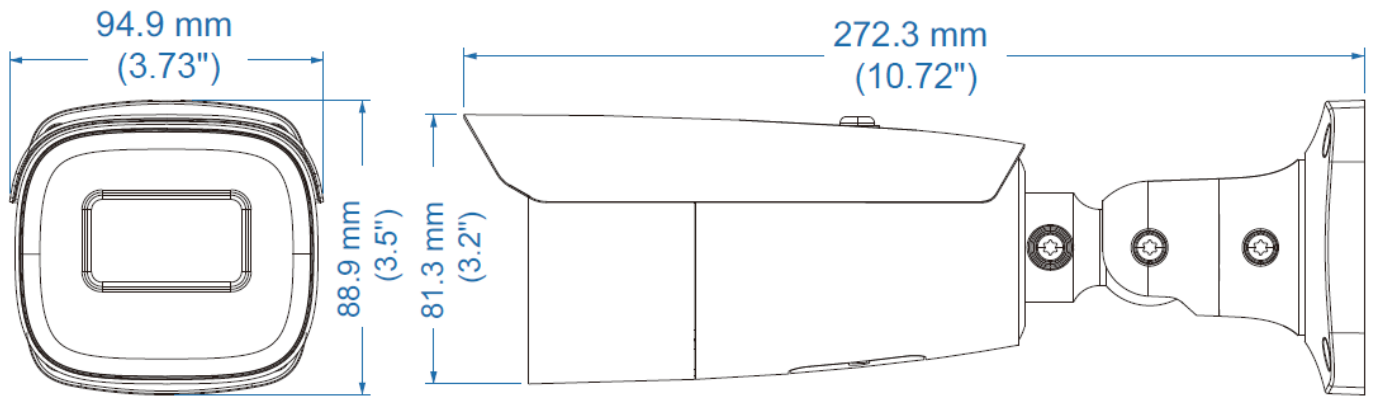
(Region Intrusion, Line Crossing, Region Entrance, Region Exiting)



People Counting



Dimensions



Specifications

| Camera | | |
|----------------------|-------|--|
| Image Sensor | | 1/3" progressive scan CMOS |
| Picture Elements | | 2592 (H) x 1520 (V) |
| Minimum Illumination | Color | 0.005 Lux (F1.3, AGC ON) |
| | IR On | 0 Lux |
| Shutter Speed | | Automatic, Manual (1/3 ~ 1/100000 sec) |
| White Balance | | Automatic, Manual |
| Gain Control | | Automatic, Manual |
| S/N Ratio | | 50 dB |
| WDR Pro | | Yes |
| Dynamic Range | | 120 dB |
| Lens | | |
| Megapixel | | 4 MP |
| Day/Night | | Yes (with removable IR-cut filter) |
| Focal Length | | 2.8-12 mm |
| Lens Type | | Motorized |
| Maximum Aperture | | F/1.3 |
| Mount | | Ø14 |
| Horizontal FOV | | 100° - 28.9° |
| Operation | Focus | Auto / Manual |
| | Zoom | 4.3x |
| | Iris | DC |
| IR LED Quantity | | 4 IR LEDs |

| | | | | | |
|-------------------------------|---------------|---|-------------------|-------------------|------------------|
| Max. IR Distance | | 70 m (230 ft) | | | |
| DORI | | Detect | Observe | Recognize | Identify |
| Lens | 2.8-12 mm (W) | 58.9 m (193.2 ft) | 23.5 m (77.0 ft) | 11.7 m (38.3 ft) | 5.8 m (19.0 ft) |
| | 2.8-12 mm (T) | 205.9 m (675.5 ft) | 82.4 m (270.3 ft) | 41.2 m (135.1 ft) | 20.6 m (67.5 ft) |
| Operation | | | | | |
| Video Compression | | H.265, H.265+, H.264, H.264+, MJPEG | | | |
| Video Streaming | | Triple streams | | | |
| Video Resolution | Main Stream | 2592 x 1520 (Default), 2560 x 1440, 2304 x 1296, 1920 x 1080 | | | |
| | Sub Stream | 1280 x 720 (Default), 704 x 576, 704 x 480, 640 x 480, 640 x 360, 480 x 240, 352 x 288, 352 x 240 | | | |
| | Third Stream | 1280 x 720 (Default), 704 x 576, 704 x 480, 480 x 240, 352 x 288, 352 x 240 | | | |
| Frame Rate | | 30 fps at 2592 x 1520 / 2560 x 1440 / 2304 x 1296 / 1920 x 1080 / 1280 x 720 / 704 x 480 / 640 x 480 / 640 x 360 / 480 x 240 / 352 x 240 (60 Hz) 25 fps at 2592 x 1520 / 2560 x 1440 / 2304 x 1296 / 1920 x 1080 / 1280 x 720 / 704 x 576 / 640 x 480 / 640 x 360 / 480 x 240 / 352 x 288 (50 Hz) * The frame rate and performance may vary depending on the number of connections and data bitrates (different scenes). | | | |
| Video Analytics | | Motion Detection, Object Abandoned / Missing Detection | | | |
| Smart Alarm | | Motion Detection, SD Card Error, SD Card Full, IP Address Conflict, Cable Disconnection, Scene Change Detection, Video Blur Detection, Video Cast Detection, Audio Exception | | | |
| Image Setting | | Brightness, Contrast, Saturation, Sharpness, Flicker-less, 3D Noise Reduction, Image Orientation (Flip, Mirror, 0°, 90°, 180°, 270°-including Corridor format). | | | |
| Dual Redundant Images | | Yes (for failsafe firmware upgrade) | | | |
| Audio Compression | | G.711 | | | |
| Audio Support | | Two-way audio (external speaker required) | | | |
| Digital I/O | Input | 1 Input, dry contact, NO / NC | | | |
| | Output | 1 Relay Output (1A 30V DC / 0.3A 125V AC) | | | |
| Deep Learning Function | | | | | |
| AI Analytics | | Face Event: Face Detection Smart Event: - Line Crossing, Region Entrance, Region Exiting, Region Intrusion, Target Counting, Heat Map, Video Metadata: Human & Vehicle classification - Loitering Detection, Illegal Parking Detection *A maximum of 2 smart detection functions are suggested at a time to ensure comprehensive detection results and the optimized performance by the camera. *Once connected to GV-Cloud VMS / GV-Center V2, up to 2 smart detection functions are supported. | | | |
| Network | | | | | |
| Interface | | 10/100 Ethernet | | | |
| Protocol | | 802.1x, DDNS, DHCP, FTP, HTTP POST, HTTP, HTTPS, IPv4, IPv6, NTP, ONVIF (Profile G, S, T, M), PPPoE, QoS, RTCP, RTMP, RTP, RTSP, SMTP, SNMP, UDP, UPnP | | | |
| Mechanical | | | | | |
| Camera Angle Adjustment | Pan | 0 ~ 360° | | | |
| | Tilt | 0 ~ 90° | | | |
| | Rotate | 0 ~ 360° | | | |
| Connectors | Power | DC jack (DC 12 V, 1.25 A), PoE | | | |
| | Ethernet | RJ-45 | | | |
| | Audio | 1 In (built-in microphone, external speaker required with power supply) 1 Out (stereo phone jack, 3.5 mm / 0.14") | | | |
| | Video Input | BNC connector | | | |
| | Digital I/O | 4-pin terminal block pitch 3.5 mm (0.14") | | | |
| | Local Storage | Micro SD card slot (SDHC / SDXC / UHS-I, Class 10) * UHS-II card type is not supported. | | | |
| General | | | | | |
| Operating Temperature | | -30~ 60°C (-22 ~ 140°F) | | | |
| Humidity | | 0 ~ 95% (no condensation) | | | |
| Power Source | | 12 V DC / PoE (IEEE802.3af) | | | |
| Max. Power Consumption | | 12.5 W | | | |
| Dimensions | | 272.3 x 94.9 x 88.9 mm (10.72 x 3.73 x 3.5") | | | |

| | |
|------------------------------|---|
| Weight | 1.04 kg (2.29 lb) |
| Ingress Protection | IP67 |
| Vandal Resistance | IK10 for metal casing |
| Certification | CE, FCC, RoHS, UKCA compliant |
| Web Interface | |
| Installation Management | Web-based configuration |
| Maintenance | Firmware upgrade through Web Browser or Utility |
| Access from Web Browser | Live View, Playback, Video Recording, Image Quality, Bandwidth Control, Image Snapshot, Digital Zoom, Text Overlay, Image Masking, Intelligent Mark |
| Language | Hungarian, English, Spanish, Spanish (LA), Italian, Portuguese, Russian, Polish, Romanian, Hebrew, German, French, Dutch, Norwegian, Czech, Turkish, Japanese, Korean, Chinese Traditional |
| Software Applications | |
| Software Supported | GV-VMS (V17.4.7 or later, V18.3.2 or later), GV-Edge Recording Manager (V2.2.7 or later), GV-Control Center (V4.2.0 or later), GV-Recording Server (V2.1.1 or later), GV-Cloud VMS (V1.1.0 or later), GV-Center V2 (V18.4.1 or later) |
| Smart Device Access | GV-Eye for iOS and Android (V3.1.1 or later) |
| Live Viewing | Web Browser (IE, Edge, Chrome, Firefox, Safari), Mobile App |




Note:

1. When connecting to GV-Cloud VMS, avoid connecting to other GV-Software at the same time.
2. Industrial-grade microSD cards are recommended to avoid event recordings writing failure.
3. All specifications are subject to change without notice.

Packing List

- | | |
|----------------------|--------------------------|
| 1. GV-GBL4911 Bullet | 4. Drill Template Paster |
| 2. Hex Key | 5. CVBS & DC IN Cables |
| 3. Screw Kit | 6. Download Guide |

Accessories

| Model No. | Name | | Details |
|---------------|---------------------|---|--|
| GV-Mount506 | Junction Box |  | Dimensions: 139.3 x 50 mm (5.48" x 1.97") Weight: 0.512kg (1.13lb) |
| GV-PA191 | PoE Adapter |  | GV-PA191 is a Power over Ethernet (PoE) adapter designed to provide power to the IP device through a single Ethernet cable. |
| GV-PA301 | Gigabit PoE Adapter |  | GV-PA301 is a Gigabit Power over Ethernet (PoE) adapter. |
| GV-POE Switch | | | GV-POE Switch is designed to provide power along with network connection for IP devices. The GV-POE Switch is available in various models with different numbers and types of ports. |
| Power Adapter | | | Contact our sales representatives for the countries and areas supported. |