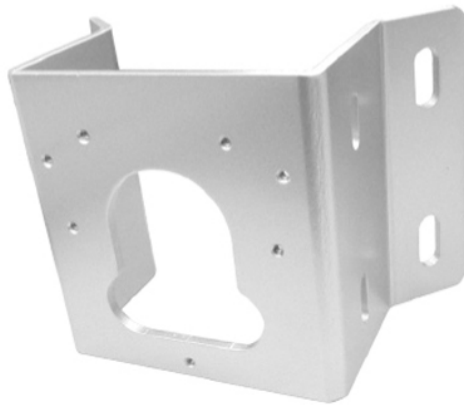




---

## Corner & Pole Mount



---

## Features

- Dimension : 190(W) x 130(H) x 105(D) mm
- Weight: 500g

---

## Specifications

Model	BTS02S
Material/ Construction	Aluminum, silver gray baked enamel finish
Maximum Load	15kg
Dimensions	190x130x105
Weight	500g

---